



INSTALLATION MANUAL & PROGRAM RECORD SHEET

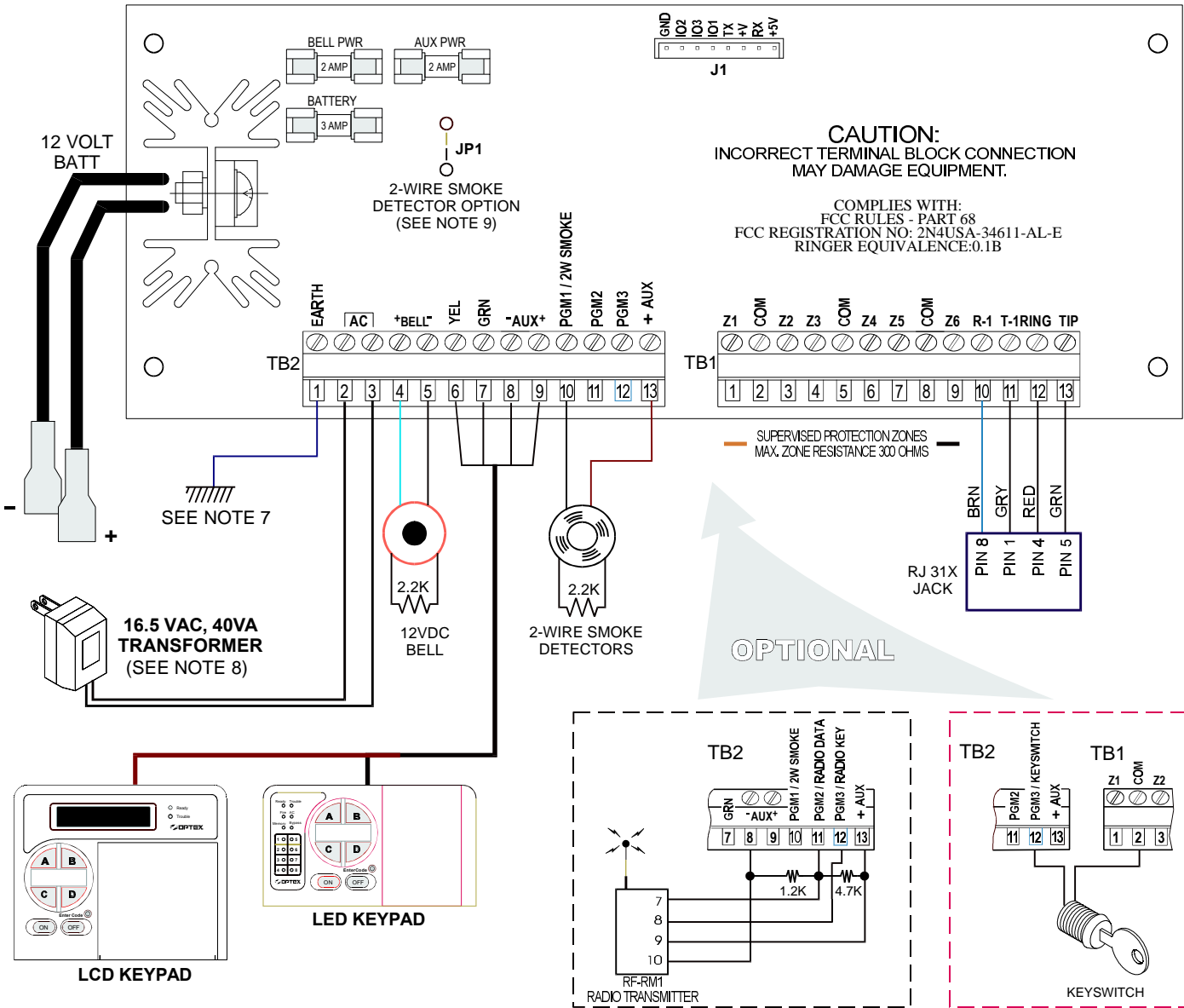


TABLE OF CONTENTS

<i>DESCRIPTION</i>	<i>PAGE</i>
<i>WIRING MANUAL</i>	<i>2-6</i>
<i>MENU CHART</i>	<i>7</i>
<i>INSTALLER FUNCTIONS</i>	<i>8</i>
<i>MENU 1 SYSTEM TIMES</i>	<i>9</i>
<i>MENU 2 ZONE CONFIGURATION</i>	<i>10-14</i>
<i>MENU 3 SYSTEM OPTIONS</i>	<i>15, 16, 21-24</i>
<i>MENU 4 PINs</i>	<i>25</i>
<i>MENU 5 NOT USED</i>	
<i>MENU 6 RECEIVERS</i>	<i>25-28</i>
<i>MENU 7 REPORT CODES</i>	<i>29-32</i>
<i>MENU 8 DOWNLOADING</i>	<i>33</i>
<i>GLOSSARY</i>	<i>34-35</i>
<i>PROGRAM RECORD SHEETS</i>	<i>17-20</i>



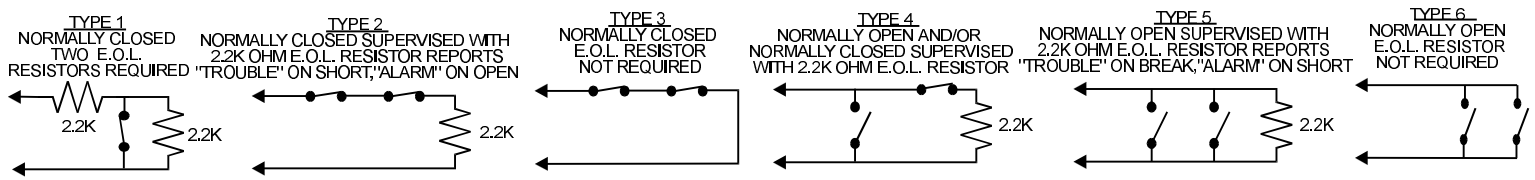
**DIGITAL ALARM COMMUNICATION TRANSMITTER (DACT)
MODEL V-CP1 (VISION)**



NOTE:

1. MAXIMUM COMBINED POWER AVAILABLE ON THE CONTROL PANEL INCLUDING TERMINALS TB2-4, TB2-9 AND TB2-13 IS 1.2 AMPS AT 12VDC. ALL CIRCUITS ARE POWER LIMITED.
2. USE 2.2K OHM 1/2 WATT RESISTORS FOR ZONES THAT REQUIRE EOL (ZONE LOOP TYPES 1, 2, 4, AND 5).
3. BELL AND 2-WIRE SMOKE ZONES ALSO REQUIRE 2.2K OHM EOL RESISTOR.
4. THE OPERATING VOLTAGE RANGE FOR SMOKE DETECTOR TERMINALS IS 10.2 TO 13.8 VOLTS.
5. PGM1, PGM2 AND PGM3 ARE OPEN COLLECTOR OUTPUTS THAT GO LOW TO APPROXIMATELY 2V WHEN ACTIVATED. AT A MAXIMUM CURRENT OF 20mA.
6. TERMINALS TB2-12 AND TB2-13 MUST BE USED FOR CABINET TAMPER FOR UL LISTED INSTALLATIONS.
7. CONNECT EARTH GROUND TO TB2-1.
8. DO NOT CONNECT TO A RECEPTACLE CONTROLLED BY A SWITCH.
9. CUT JP1 TO SELECT 2-WIRE SMOKE DETECTOR INPUT, WHEN PGM1 IS PROGRAMMED WITH 2-W SMOKE OPTION (20).
10. THE UNIT SHOULD BE TESTED WEEKLY.
11. CONTROL PANEL COMPATIBILITY IDENTIFIER NUMBER IS XXXX-XXXX.
12. FOR INSTALLATION INSTRUCTIONS, SEE INSTALLERS MANUAL, OPTEX PART NUMBER: 3440-0XXX REV X.
13. THIS CONTROL UNIT SHOULD BE CHECKED BY A QUALIFIED TECHNICIAN AT LEAST EVERY 3 YEARS.

THIS PRODUCT HAS NOT BEEN INVESTIGATED FOR MEDICAL EMERGENCY, PANIC AND / OR HELP SIGNAL APPLICATIONS.



Vision introduces a new level of simplicity and flexibility to Security Control Systems. Vision’s advanced design gives Users and Installers greater utility and easier operation from their security system. Please read this manual carefully to ensure that you receive the maximum benefit from Vision’s unique features.

Vision has four factory-set programming templates built-in. For a quick and easy installation, pick the programming template (Menu 0, Option 2) that most closely resembles your installation. Then program the communicator and make whatever customizations are appropriate for your application.

Vision’s Quad Key is an excellent way to customize your system to meet your customer’s needs. In Menu 3, Section 2, you can select Zone Type, Mode, or Area Arming of the system. This programming area also allows you to activate Vision’s convenient Night By-Pass feature.

Vision can be programmed by using an LCD keypad, a field programmer, or a computer, using the Remote Programming Utility (RPU) software with either a telephone connection or a direct connection on-site (an INT module is required for direct connect).

Thank you for purchasing Vision. We’re committed to your Security *and* your Satisfaction.

Wiring Data - Terminal Block 2 (TB2)

Terminal #	Description
1	<p>Earth Ground</p> <ul style="list-style-type: none"> You must use a minimum 18 gauge wire. Do not connect to chassis, electrical or telephone ground.
2 & 3	<p>AC Input</p> <ul style="list-style-type: none"> Use 16.5VAC, 40VA Basler Electric BE116240CAA Class 2 transformer only. Installation of incorrect transformer may undercharge battery. Use only unswitched electrical outlet.
4 (+) & 5 (-)	<p>12VDC Bell Output</p> <ul style="list-style-type: none"> Connect 12VDC indicating devices to these terminals while observing polarity.
6, 7, 8, 9	<p>Keypad Input</p> <ul style="list-style-type: none"> A total of four keypads can be connected to the alarm system. You may mix LCD and LED keypads in the same installation. Terminal 6 Data (yellow wire) Terminal 7 Clock (green wire) Terminal 8 Ground (black wire) Terminal 9 Positive voltage (red wire) These terminals provide an output voltage of approximately 13.5VDC. Maximum keypad wire lengths: <p style="text-align: center;"> AWG 18 - AWG 20 - AWG 22 – 2,000 feet </p>

Wiring Data - Terminal Block 2 (TB2)

Terminal #	Description
10	<p>PGM 1 output</p> <ul style="list-style-type: none"> Terminal 10 maybe used for either a PGM output or for 2 Wire smoke detectors. The PGM is an open collector output that will sink to ground on activation. Use terminal 13 for the positive connection of your device. The maximum current draw for this circuit is 20mA at 12VDC for indicating devices
10	<p>2-Wire Smoke Detector Input</p> <ul style="list-style-type: none"> Connect the negative side of your 2-Wire Smoke Detector circuit to this terminal. See JP1 Note on Page 5 and wiring instructions on page 7.
12	<p>PGM 3 Output</p> <ul style="list-style-type: none"> Terminal 12 maybe used as PGM Output, Key-Switch Arming, or Tamper Circuit The PGM is an open collector output that will sink to ground on activation. Use terminal 13 for the positive connection of your device. The maximum current draw for this circuit is 20mA at 12VDC for indicating devices.
12	<p>Key-Switch Arming</p> <ul style="list-style-type: none"> Connect either side of your arming device to this terminal. Connect the other side of your arming device to terminal number 13. This input is programmable for a latching or momentary device.
13	<p>Auxiliary Power (+)</p> <ul style="list-style-type: none"> Use this terminal for the positive side of your indicating devices. This output is continuous.

Wiring Data - Terminal Block 1 (TB1)

Terminal #	Description								
1 - 9	<p>Zone Inputs</p> <ul style="list-style-type: none"> The common side of each zone floats above ground. Normally open and/or normally closed, or a combination of both may be installed. Each zone may be individually programmed for supervision. 2.2K ohm 1/2W EOL resistors (red-red-red-gold). Loop response times may be programmed individually for each zone. All smoke detectors, heat detectors, water flow switches, pull station must use EOL Resistors Zone input voltages for supervised zones (with EOL) are as follows: <table border="0" style="margin-left: 40px;"> <thead> <tr> <th><u>Electrical State</u></th> <th><u>Voltage Readings</u></th> </tr> </thead> <tbody> <tr> <td>Normal State</td> <td>1.7 - 3.2 VDC</td> </tr> <tr> <td>Open</td> <td>3.5 - 5.0 VDC</td> </tr> <tr> <td>Short</td> <td>0.0 - 1.5 VDC</td> </tr> </tbody> </table>	<u>Electrical State</u>	<u>Voltage Readings</u>	Normal State	1.7 - 3.2 VDC	Open	3.5 - 5.0 VDC	Short	0.0 - 1.5 VDC
<u>Electrical State</u>	<u>Voltage Readings</u>								
Normal State	1.7 - 3.2 VDC								
Open	3.5 - 5.0 VDC								
Short	0.0 - 1.5 VDC								
10	<ul style="list-style-type: none"> PREMISE RING Connect to PIN 8 on the RJ-31X via the Brown wire 								
11	<ul style="list-style-type: none"> PREMISE TIP Connect to PIN 1 on the RJ-31X via the Grey wire 								
12	<ul style="list-style-type: none"> TELCO RING Connect to PIN 4 on the RJ-31X via the Red wire 								
13	<ul style="list-style-type: none"> TELCO TIP Connect to PIN 5 on the RJ-31X via the Green wire 								
JP1	<ul style="list-style-type: none"> This jumper <i>must</i> be <i>cut</i> if PGM1 will be used for 2-wire smoke detectors. 								

Keypad Wiring & Keypad Zones

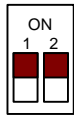
Up to four remote keypads, may be connected to the security system via the four wire keypad data bus. Any combination of LED and LCD keypads may be used on the system. It is necessary to assign addresses to each keypad. See below for instructions on addressing keypads.

Keypad 1 can support detection zones. Connect alarm inputs to terminals Z1, COM, Z2 of the keypad.

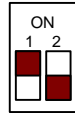
Keypad Address Switches

Each keypad has a pair of miniature dip switches that *must be* addressed for the alarm system to correctly identify each installed keypad. The alarm system will generate a *BUS FAILURE* message if more than one keypad has the same address. Use the following diagrams to correctly address each keypad.

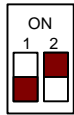
Note: Power must be removed from the keypads to address or readdress keypad(s).



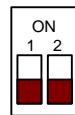
Keypad Number 1
Switch 1 On
Switch 2 On



Keypad Number 3
Switch 1 On
Switch 2 Off



Keypad Number 2
Switch 1 Off
Switch 2 On



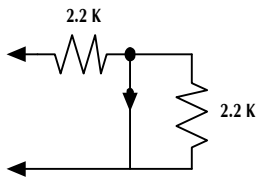
Keypad Number 4
Switch 1 Off
Switch 2 Off

Proper operation of all keypads can be confirmed by using the Keypad Bus Test Command (Option 3) located in the Installer's Options Menu (Menu 0).

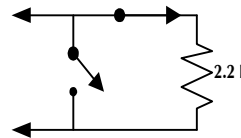
Current Draw

Product	Description	Current Draw
V-CP1	Vision Alarm Panel	50mA each
V-LCD1	Vision LCD Keypad	65mA each
V-LED1	Vision LED Keypad	55mA each

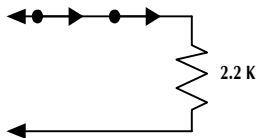
Zone Types with EOL Placement



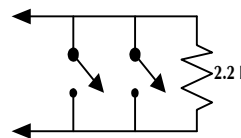
Loop Type 01
Normally Closed with double EOL.
Alarm on an break.
Trouble condition on a short before both resistors..



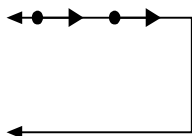
Loop Type 04
Normally Open / Normally Closed with EOL.
Alarm on an open/close.
No Trouble conditions.



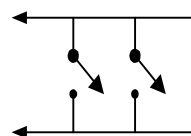
Loop Type 02
Normally Closed with EOL.
Alarm on an break.
Trouble on a short.



Loop Type 05
Normally Open with EOL.
Alarm on a short.
Trouble on break.



Loop Type 03
Normally Closed without EOL.
Alarm on an break.
No Trouble conditions

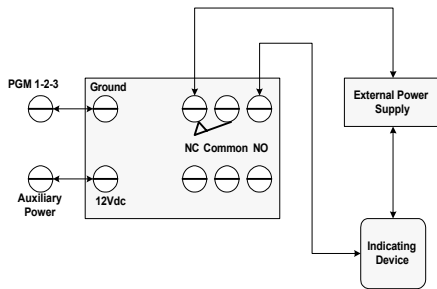


Loop Type 06
Normally Open without EOL.
Alarm on short.
No Trouble conditions.

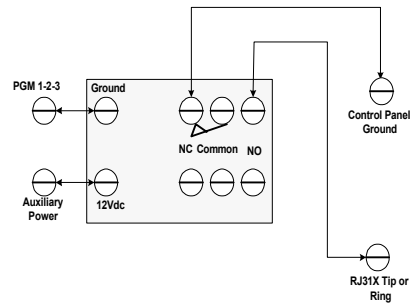
PGM OUTPUT WIRING

- PGM outputs are low current transistor outputs that are held above ground.
- Once these outputs are triggered they sink to ground and supply a 50 mA output maximum.
- **Warning: Drawing more than 50mA can damage these outputs.**

Additional Alarm Output



Ground Start Phone System



2-WIRE SMOKE DETECTOR INPUT (PROGRAMMING OPTION FOR PGM 1)

- Cut Jumper JP1
- Connect Negative (-) lead of circuit to terminal 10 and Positive (+) lead to terminal 13.
- This input requires a 2.2K ohm EOL resistor placed in parallel at the last smoke detector.
- Select programming option #20 in menu 36-1 (PGM 1 Type).
- The maximum number of smoke detectors that may be installed is 10.
- Use the following table to troubleshoot the 2-wire smoke detector circuit.
- When reading DC voltage place meter probes to terminals 10 and 13

<u>Condition</u>	<u>Voltage Reading</u>
Trouble	0.0 Vdc to 0.66 Vdc
Normal	0.70 Vdc to 1.17 Vdc
Alarm	1.25 Vdc to 13.6 Vdc

CHART OF PROGRAMMING MENUS

Press 7 + ↑+ installer's code, then select a single digit function number from Menu 0.

INSTALLER FUNCTIONS

- 1 Default Install Program
- 2 Templates
- 3 BUS Test
- 4 Comm. Test
- 5 History Print
- 6 Installer's Program
- 7 Initiate Download

After entering Installer's Program (6), select a two digit item number from menus 1-8.

MENU 1

11 Delay Times

- 11-1 Pre-Alarm
- 11-2 Entry Delay 1
- 11-3 Entry Delay 2
- 11-4 Exit Delay 1
- 11-5 Exit Delay 2

12 Cutoff Times

- 12-1 Bell
- 12-2 PGM 1
- 12-3 PGM 2
- 12-4 PGM 3

13-19 not used

MENU 2

21 Zone Configuration

- Select Zone Number
- 21-Z#-1 Zone Type
- 21-Z#-2 Loop Type
- 21-Z#-3 Loop Response
- 21-Z#-4 Zone Options 1
 - 1. Entry Delay 1
 - 2. Entry Delay 2
 - 3. Exit Delay 1
 - 4. Exit Delay 2
 - 5. Ignore During Delay
 - 6. Entry Follower
 - 7. Final Door
- 21-Z#-5 Zone Options 2
 - 1. Auto Arm
 - 2. Key-Switch Arm
 - 3. Night Bypass
 - 4. Day Zone
 - 5. Silent Day/Aud. Night
 - 6. Silent Always
- 21-Z#-6 Zone Options 3
 - 1. Telephone
 - 2. Bypass Allowed
 - 3. Swinger Shutdown
 - 4. Display Armed
 - 5. Walk Test
 - 6. Chime
 - 7. Bell
 - 8. Pulse Bell
- 21-Z#-7 Zone Options 4
 - 1. PGM 1
 - 2. PGM 2
 - 3. PGM 3

21-Z#-8 Zone Options 5

- 1. Group 1
- 2. Group 2
- 3. Group 3
- 4. Group 4

21-Z#-9 Zone Name

22-29 Not Used \ Reserved

MENU 3

31 System Features

- 31-1 System Options 1
 - 1. Need PIN to Arm
 - 2. Need PIN to Bypass
 - 3. Force Arm
 - 4. Force Arm-Auto Arm
 - 5. Quick Exit
 - 6. Default Install PIN
 - 7. Up Arming Enabled
 - 8. Exit Delay on Up Arm
- 31-2 System Options 2
 - 1. KP Tone on Entry
 - 2. KP Tone on Exit
 - 3. Bell on Entry
 - 4. Bell on Exit
 - 5. Automatic Bell Test
 - 6. Auto Chime on Disarm
- 31-3 System Option3
 - 1. Crystal Clock
 - 2. AC Clock 50/60Hz
 - 3. Daylight Savings

32 Quad Key Function

- 32-1 Arming Method
- 32-2 D Key Options

33 Keypad Configuration

- Select Keypad Number
- 33-KP#-1 Keypad 1
- 33-KP#-2 Keypad 2
- 33-KP#-3 Keypad 3
- 33-KP#-4 Keypad 4

34 Keypad Alarms

- 34-1 Keypad Alarms
 - 1. KP Silent Panic
 - 2. KP Audible Panic
 - 3. KP Fire
 - 4. KP Emergency

35 PGM Input

- 35-1 PGM3 Type
 - 0. Disabled (Output)
 - 1. Momentary Keyswitch
 - 2. Latch Key-Switch
 - 3. Box Tamper
 - 4. Sensor Tamper

36 PGM Output

- 36-1 PGM1
- 36-2 PGM2
- 36-3 PGM3

37 History Store \ Print

- 1. Alarm \ Restore
- 2. Trouble \ Restore
- 3. Open \ Close
- 4. Timed Print History

38-39 Not Used \ Reserved

MENU 4

41 PINs

- 41-1 Installer PIN
- 41-2 Duress PIN
- 41-3 User 1 PIN

MENU 5

Not Used \ Reserved

MENU 6

61 Receiver 1

- 61-1 Telephone Number
- 61-2 Account Number
- 61-3 Receiver Format
- 61-4 Dial Attempts

62 Receiver 2

- 62-1 Telephone Number
- 62-2 Account Number
- 62-3 Receiver Format
- 62-4 Dial Attempts

63 Receiver Options

- 63-1 Alarm Report Options
- 63-2 O/C Report Options
- 63-3 System Report Options

64 Dial Features

- 64-1 Dial Features
 - 1. TT or Rotary
 - 2. Rotary Fallback
 - 3. 2300Hz Tones
 - 4. Tel. Line Monitor
- 64-2 Delay Before Dial
- 64-3 Anti Jam
- 64-4 AC Fail Delay

65-Self Test

- 65-1 Fixed \ Start Time
- 65-2 Test Option

66-Personal Alarm Call

- 66-1 Telephone Number
- 66-2 Tone 1 Assignment
- 66-3 Tone 2 Assignment
- 66-4 Report Tone Duration

67 Pager

- 67-1 Telephone Number
- 67-2 Message Assign.
- 67-3 Range / Alarm Code
- 67-4 Range / Trouble Code
- 67-5 Range / O/C Code
- 67-6 Acct Number - Alarm
- 67-7 Acct Number - Trouble
- 67-8 Acct Number - O/C
- 67-9 Pager Delay

68-69-Not Used \ Reserved

MENU 7

71-Zone Report Codes

- Select Zone Number
- 71-1 Zone Alarm
- 71-2 Zone Trouble
- 71-3 Zone Bypass
- 71-4 Zone Restore

72 Keypad Report Codes

- 72-1 Keypad Panic
- 72-2 Keypad Fire
- 72-3 Keypad Emergency

73 User Arming Report Codes

- Select User Number
- 73-U#-1 User Open
- 73-U#-2 User Close

74 Trouble Report Codes (1)

- 74-1 AC Fail
- 74-2 AC Fail Restore
- 74-3 Low Battery
- 74-4 Battery Restore
- 74-5 Box Tamper
- 74-6 Box Tamper Restore
- 74-7 Bell Fault Trouble
- 74-8 Bell Fault Restore

75 Trouble Report Codes (2)

- 75-1 Bus Fail
- 75-2 Bus Fail Restore
- 75-3 AUX Power Trouble
- 75-4 AUX Power Restore
- 75-5 Clock Trouble
- 75-6 Clock Restore
- 75-7 Telephone Trouble
- 75-8 Telephone Restore

76 Trouble Report Codes (3)

- 76-1 Sensor Tamper Trbl
- 76-2 Sensor Tamper Rest

77 Miscellaneous Report Codes (1)

- 77-1 Duress
- 77-2 Cancel
- 77-3 Auto-Arm
- 77-4 Fail to Auto Arm
- 77-5 Self-Test
- 77-6 Abnormal Test
- 77-7 Recent Close
- 77-8 Exit Error

78 Miscellaneous Report Codes (2)

- 78-1 Force Arm
- 78-2 Remote Arm (RPU)
- 78-3 Remote Disarm (RPU)
- 78-4 Full Arm
- 78-5 Partial Arm

79 2-Wire Smoke Report Codes

- 79-1 2-Wire Smoke Alarm
- 79-3 2-Wire Smoke Trouble
- 79-3 2-Wire Smoke Restore

MENU 8

81 Download (RPU)

- 81-1 Telephone Number
- 81-2 Panel Access ID
- 81-3 Local RPU PIN
- 81-4 RPU Features
 - 1. Double Call
 - 2. Call Back
- 81-5 Number of Rings
- 81-6 Double Call Wait Time

INSTALLER FUNCTIONS

THE INSTALLER'S PIN IS REQUIRED TO ACCESS THE INSTALLER'S OPTIONS MENU. PRESS (↑) + 7 + INSTALLER'S CODE TO ENTER MENU 0.

INSTALLER FUNCTIONS

- 1- Default Installer Program
- 2- Templates
- 3- BUS Test
- 4- Communications Test
- 5- History Print
- 6- Enter Installer's Program
- 7- Initiate Download

1 RESET DEFAULT PROGRAM

This operation resets the entire program (including Installer's code) of the alarm system to the factory default options. Program Installer's PIN in Menu 41-1.

(See menu 31-1-6 to disable hardware reset of Installer's PIN).

Press (↑) + 7 + installer PIN + 1 + (↑)

2 PROGRAM TEMPLATES

This option allows quick loading of one of four zone templates. These templates are:

TEMPLATE OPTIONS				
ZONE NUMBER	DEFAULT (0)	TEMPLATE 1 (1 DOOR SYSTEM)	TEMPLATE 2 (2 DOOR SYSTEM)	TEMPLATE 3 (3 DOOR SYSTEM)
1	01 (DOOR)	01 (DOOR)	01 (DOOR)	01 (DOOR)
2	02 (WINDOW)	02 (WINDOW)	01 (DOOR)	01 (DOOR)
3	02 (WINDOW)	02 (WINDOW)	02 (WINDOW)	01 (DOOR)
4	02 (WINDOW)	03 (INTERIOR)	02 (WINDOW)	02 (WINDOW)
5	03 (INTERIOR)	03 (INTERIOR)	03 (INTERIOR)	02 (WINDOW)
6	03 (INTERIOR)	00 (DISABLED)	03 (INTERIOR)	03 (INTERIOR)
7	00 (DISABLED)	00 (DISABLED)	00 (DISABLED)	00 (DISABLED)
8	00 (DISABLED)	00 (DISABLED)	00 (DISABLED)	00 (DISABLED)

Press (↑) + (7) + Installer PIN + (2) + (↑) + select the template number (↑). Range: 0-3

3 BUS TEST

This option tests the operation of attached keypad(s).

Press (↑) + (7) + Installer PIN + (3) + (↑)

After initiating the Bus Test, Zone Indicators 1-4 on the LED or LCD display will report the status of the corresponding keypad: **ON STEADY** indicates the keypad is functional; **BLINKING** indicates the keypad has been programmed but the keypad has not responded to the Bus Test; **NOT LIT** indicates the panel is not programmed for the keypad.

4 COMMUNICATION TEST

This option tests communications to central station.

Press (↑) + 7 + installer PIN + 4 + (↑)

Lit Zone Indicators 1-4 show results for Receiver 1. Indicators 5-8 show results for Receiver 2.

- (1) or (5) No Phone Number (3) or (7) No Handshake
- (2) or (6) No Dial Tone (4) or (8) No Kiss-Off

Press OFF to clear and reset display before testing. Press (4) to initiate a test using the test code.

(See section 77-5, Miscellaneous Report Codes (1) to program test code)

5 PRINT HISTORY

Use this option to print History Reports:

1. Entire history.
2. The most recent twenty events.
3. All events in history since last print out.

Press (↑) + (7) + Installer PIN + (5) + (↑) , then select the history print option (1-3).

6 ENTER INSTALLER'S PROGRAMMING

Press (↑) + 7 + installer PIN + 6 + (↑)

7 INITIATE DOWNLOAD

Press (↑) + 7 + installers PIN + 7 + (↑)

MENU 1 - SYSTEM TIMES

THESE TWO MENUS DETERMINE TIMING FUNCTIONS FOR THE SECURITY SYSTEM.

11 DELAY TIMES

THESE FIVE ITEMS DETERMINE THE ENTRY AND EXIT DELAY PERIODS REQUIRED FOR THE SECURITY SYSTEM.

11-1 Pre-Alarm Delay

Select the duration of 'Quiet Time' before the audible entry delay begins. **Note:** This value of "silent" time will be added to the total entry delay time. *If an alarm has occurred during the current armed period there will be no Pre-Alarm Delay.*

Default: 00 seconds **Range: 00-99 seconds**

11-2 Entry Delay 1

Select the amount of time required to enter the premise and disarm the alarm system *Note: This delay can be applied to zones programmed as Doors, Windows, Interior and Exterior. (See menu 21-4-1 to apply this delay period to zones).*

Default: 45 seconds **Range: 00-99 seconds**

11-3 Entry Delay 2

Select the amount of time required to enter the premise and disarm the alarm system. **Note:** this value of time will be added to the time programmed in Entry Delay 1 and Pre-Alarm Delay whenever an Entry Delay 2 zone is activated. *Note: This delay can be applied to zones programmed as Doors, Windows, Interior and Exterior. (See menu 21-4-2 to apply this delay period to zones).*

Default: 45 seconds **Range: 00-99 seconds**

11-4 Exit Delay 1

Select the amount of time required to exit the premise after arming the alarm system. *Note: This delay can be applied to zones programmed as Doors, Windows, Interior and Exterior. (See menu 21-4-3 to apply this delay period to zones).*

Default: 60 seconds **Range: 00-99 seconds**

11-5 Exit Delay 2

Select the amount of time required to exit the premise after arming the alarm system. **Note:** this value of time will be added to the time programmed in Exit Delay 1 whenever an Exit Delay 2 zone is activated. *Note: This delay can be applied to zones programmed as Doors, Windows, Interior and Exterior. (See menu 21-4-4 to apply this delay period to zones).*

Default: 60 seconds **Range: 00-99 seconds**

12 CUTOFF TIMES

THESE FOUR ITEMS DETERMINE THE CUTOFF PERIODS FOR INDICATING DEVICES ATTACHED TO THE SECURITY SYSTEM.

12-1 Bell

Select the amount of time for the bell output to remain energized. *(See menu 21-6-7, Bell Output Options)*

Default: 10 (minutes) **Range: 00-99 minutes**

12-2 PGM 1

Select the amount of time for PGM 1 output to remain energized. *(See menu 36-1, PGM 1 Output Options)*

Default: 10 (minutes) **Range: 00-99 minutes***

12-3 PGM 2

Select the amount of time for PGM 2 output to remain energized. *(See menu 36-2, PGM 2 Output Options)*

Default: 10 (minutes) **Range: 00-99 minutes***

12-4 PGM 3

Select the amount of time for PGM 3 output to remain energized. *(See menu 36-3, PGM 3 Output Options)*

Default: 10 (minutes) **Range: 00-99 minutes***

* Enter 00 for 5 second activation period

MENU 1 CHART

- 11 Delay Times
- 11-1 Pre-Alarm
- 11-2 Entry Delay 1
- 11-3 Entry Delay 2
- 11-4 Exit Delay 1
- 11-5 Exit Delay 2
- 12 Cutoff Times
- 12-1 Bell Cutoff
- 12-2 PGM 1 Cutoff
- 12-3 PGM 2 Cutoff
- 12-4 PGM 3 Cutoff

MENU 2 - ZONE CONFIGURATION

Vision has been preprogrammed with zones and zone characteristics already defined. In addition to its default programming, three additional templates have been provided. Programming can be minimized by choosing the template which best suits your application. See menu 0-2, Installer's Options/Templates on page 8.

MENU 2 CHART	
21 Zone Configure	
Select Zone Number	
21-Z#-01 Zone Type	
21-Z#-02 Loop Type	
21-Z#-03 Loop Response	
21-Z#-04 Zone Options 1	
1. Entry Delay 1	
2. Entry Delay 2	
3. Exit Delay 1	
4. Exit Delay 2	
5. Ignore During Delay	
6. Entry Follower	
7. Final Door	
21-Z#-05 Zone Options 2	
1. Auto Arm	
2. Key-Switch Arm	
3. Night Bypass	
4. Day Zone	
5. Silent Day/Aud. Night	
6. Silent Always	
21-Z#-06 Zone Options 3	
1. Telephone	
2. Bypass Allowed	
3. Swinger Shutdown	
4. Display Armed	
5. Walk Test	
6. Chime	
7. Bell	
8. Pulse Bell	
21-Z#-07 Zone Options 4	
1. PGM 1	
2. PGM 2	
3. PGM 3	
21-Z#-08 Zone Options 5	
1. Arming Area 1	
2. Arming Area 2	
3. Arming Area 3	

21 ZONE CONFIGURATION

THESE NINE ITEMS ALLOW THE CUSTOMIZATION OF EACH INDIVIDUAL ZONE.

SELECT ZONE NUMBER (SELECT THE ZONE NUMBER YOU WISH TO PROGRAM).

21-Z#-1 Zone Type

Select the zone type for this zone from the list below.

Default: Variable **Range:** 01-06

ZONE TYPE	DESCRIPTION	ZONE TYPE	DESCRIPTION
01	DOORS	04	EXTERIOR
02	WINDOWS	05	24 HOUR
03	INTERIOR	06	FIRE

Operating characteristics for each zone type are preprogrammed, but may be reprogrammed in sections 21-Z#-04, 21-Z#-05, and 21-Z#-06. See page 11 for a chart which shows the default characteristics of each zone type.

21-Z#-2 Loop Type

Select the loop type for this zone from the list below.

Default: 04 **Range:** 01-06

LOOP TYPE	DESCRIPTION	EOL REQUIRED
01	NORMALLY CLOSED	YES (2 EOL)
02	NORMALLY CLOSED	YES (1 EOL)
03	NORMALLY CLOSED	No EOL
04	NORMALLY OPEN \ NORMALLY CLOSED	YES (1 EOL)
05	NORMALLY OPEN	YES (1 EOL)
06	NORMALLY OPEN	No EOL

- 01 For use with detectors that open on alarm. Trouble report and/or annunciation on Short or Break.
- 02 For use with devices that open on alarm. Trouble report and/or annunciation on Short.
- 03 For use with devices that open on alarm. No Trouble report or annunciation.
- 04 For use with devices that open or close on alarm. No Trouble report or annunciation.
- 05 For use with devices that close on alarm. Trouble report and/or annunciation on Break.
- 06 For use with devices that close on alarm. No Trouble report or annunciation.

21-Z#-3 Loop Response

Select the length of time the circuit must remain in a non-secure condition in order to initiate an alarm activation or abnormal condition. For a loop response time of 10ms to 20ms, enter 00.

Default: 05 (250ms) **Range:** 00-99 x 50ms

21 ZONE CONFIGURATION

THESE NINE ITEMS ALLOW THE CUSTOMIZATION OF EACH INDIVIDUAL ZONE.

WHEN A ZONE TYPE IS ASSIGNED TO A ZONE, THE DEFAULT ZONE CHARACTERISTICS SHOWN BELOW ARE AUTOMATICALLY BE ASSIGNED TO THAT ZONE. USE SECTIONS 21-Z#-04, 21-Z#-05, AND 21-Z#-06 TO ADJUST THESE OPTIONS AND INDIVIDUALLY CUSTOMIZE EACH ZONE'S CHARACTERISTICS.

PRE-SET ZONE TYPES / DEFAULT OPTION SETTINGS

	(01)	(02)	(03)	(04)	(05)	(06)	
	DOOR	WINDOW	INTERIOR	EXTERIOR	24HR	FIRE	RANGE
21-Z#-04 Zone Options 01							
1. ENTRY DELAY 1	ON			ON			ON\OFF
2. ENTRY DELAY 2							ON\OFF
3. EXIT DELAY 1	ON	ON	ON	ON			ON\OFF
4. EXIT DELAY 2							ON\OFF
5. IGNORE DURING DELAY							ON\OFF
6. ENTRY FOLLOWER			ON				ON\OFF
7. FINAL DOOR							ON\OFF

PRE-SET ZONE TYPES / DEFAULT OPTION SETTINGS

	(01)	(02)	(03)	(04)	(05)	(06)	
	DOOR	WINDOW	INTERIOR	EXTERIOR	24HR	FIRE	RANGE
21-Z#-05 Zone Options 02							
1. AUTO-ARM	ON	ON	ON				ON\OFF
2. KEY-SWITCH ARM	ON	ON	ON				ON\OFF
3. NIGHT BY-PASS							ON\OFF
4. DAY ZONE							ON\OFF
5. SILENT DAY/AUD NIGHT							ON\OFF
6. SILENT ALWAYS							ON\OFF

PRE-SET ZONE TYPES / DEFAULT OPTION SETTINGS

	(01)	(02)	(03)	(04)	(05)	(06)	
	DOOR	WINDOW	INTERIOR	EXTERIOR	24HR	FIRE	RANGE
21-Z#-06 Zone Options 03							
1. TELEPHONE	ON	ON	ON		ON	ON	ON\OFF
2. BYPASS ALLOWED	ON	ON	ON	ON	ON		ON\OFF
3. SWINGER SHUNT	ON	ON	ON				ON\OFF
4. DISPLAY ARMED	ON	ON	ON	ON	ON	ON	ON\OFF
5. WALK TEST	ON	ON	ON	ON			ON\OFF
6. CHIME	ON			ON			ON\OFF
7. BELL OUTPUT	ON	ON	ON	ON	ON		ON\OFF
8. PULSE BELL						ON	ON\OFF

MENU 2 CHART

- 21 Zone Configuration**
- Select Zone Number
- 21-Z#-01 Zone Type**
- 21-Z#-02 Loop Type**
- 21-Z#-03 Loop Response**
- 21-Z#-04 Zone Options 1**
 - 1. Entry Delay 1
 - 2. Entry Delay 2
 - 3. Exit Delay 1
 - 4. Exit Delay 2
 - 5. Ignore During Delay
 - 6. Entry Follower
 - 7. Final Door
- 21-Z#-05 Zone Options 2**
 - 1. Auto-Arm
 - 2. Key-Switch Arm
 - 3. Night Bypass
 - 4. Day Zone
 - 5. Silent Day/Aud. Night
 - 6. Silent Always
- 21-Z#-06 Zone Options 3**
 - 1. Telephone
 - 2. Bypass Allowed
 - 3. Swinger Shutdown
 - 4. Display Armed
 - 5. Walk Test
 - 6. Chime
 - 7. Bell
 - 8. Pulse Bell
- 21-Z#-07 Zone Options 4**
 - 1. PGM 1
 - 2. PGM 2
 - 3. PGM 3
- 21-Z#-08 Zone Options 5**
 - 1. Arming Area 1
 - 2. Arming Area 2
 - 3. Arming Area 3
 - 4. Arming Area 4
- 21-9 Zone Name**

MENU 2 CHART

21 Zone Configuration

Select Zone Number

21-Z#-01 Zone Type

21-Z#-02 Loop Type

21-Z#-03 Loop Response

21-Z#-04 Zone Options 1

1. Entry Delay 1
2. Entry Delay 2
3. Exit Delay 1
4. Exit Delay 2
5. Ignore During Delay
6. Entry Follower
7. Final Door

21-Z#-05 Zone Options 2

1. Auto-Arm
2. Key-Switch Arm
3. Night Bypass
4. Day Zone
5. Silent Day/Aud. Night
6. Silent Always

21-Z#-06 Zone Options 3

1. Telephone
2. Bypass Allowed
3. Swinger Shutdown
4. Display Armed
5. Walk Test
6. Chime
7. Bell
8. Pulse Bell

21-Z#-07 Zone Options 4

1. PGM 1
2. PGM 2
3. PGM 3

21-Z#-08 Zone Options 5

1. Arming Area 1
2. Arming Area 2
3. Arming Area 3
4. Arming Area 4

21 ZONE CONFIGURATION

21-4 Zone Options 1

THESE SEVEN OPTIONS CAN BE USED TO INDIVIDUALLY CUSTOMIZE EACH ZONE.

1 - Entry Delay 1

Applies Entry Delay 1 to the zone currently being programmed.

(See menu 11-2, Entry Delay 1 to adjust the duration of Entry Delay 1)

Default: determined by zone type **Range:** On or Off

2 - Entry Delay 2

Adds Entry Delay 2 and Entry Delay 1 to the zone currently being programmed.

(See menu 11-3, Entry Delay 2 to adjust the duration of Entry Delay 2)

Default: determined by zone type **Range:** On or Off

3 - Exit Delay 1

Applies Exit Delay 1 to the zone currently being programmed.

(See menu 11-4, Exit Delay 1 to adjust the duration of Exit Delay 1)

Default: determined by zone type **Range:** On or Off

4 - Exit Delay 2

Adds Exit Delay 2 and Exit Delay 1 to the zone currently being programmed.

(See menu 11-5, Exit Delay 2 to adjust the duration of Exit Delay 2)

Default: determined by zone type **Range:** On or Off

5. Ignore During Exit Delay

This option allows the user to arm the security system if this zone is in a non-secure condition.

This zone must be secured before the exit delay expires or an alarm will occur.

Default: determined by zone type **Range:** On or Off

6. Entry Follower

This option allows the zone to delay activating an alarm condition during the entry delay period if an entry zone is activated first.

Default: determined by zone type **Range:** On or Off

7. Final Door Logic

This option cancels the exit delay time and arms the security system immediately if the panel recognize an open and close on a circuit with this option enabled. Final Door Logic can be applied to zones programmed as Doors, Windows, and Exterior.

Default: determined by zone type **Range:** yes or no

21-5 Zone Options 2

THESE SIX OPTIONS CAN BE USED TO INDIVIDUALLY CUSTOMIZE EACH ZONE.

1. Auto Arming

This option allows the zone to be included in Auto-Arming.

(See User Program, User Programming [6] to set Auto-Arming operation)

Default: determined by zone type **Range:** yes or no

2. Key-Switch Arming

This option allows the zone to be included in Key-Switch Arming.

(See menu 35, PGM INPUT to program Key-Switch Arming PGM operation)

Default: determined by zone type **Range:** yes or no

3. Night Bypass

This option allows the zone to be automatically bypassed when the D Key is used to arm the system and the Quad Key has been programmed for Night Bypass Arming.

(See menu 32-2, D Key Options for information about using the D Key for Night Bypass)

Default: determined by zone type **Range:** yes or no

21 ZONE CONFIGURATION

4. Day Zone

This option allows a 24 hour zone to provide an audible and visual zone trouble indication and to report a trouble indication (rather than alarm) while the system is disarmed.

Note: the loop type must be programmed for EOL in menu 21-2, Loop Type.

Default: determined by zone type **Range:** On or Off

5. Silent Day / Audible Night

This option inhibits a 24 hour zone from energizing the bell output or keypad indicator during the disarm period.

Note: PGMs will function if selected as an alarm output in menu 21-7.

Default: determined by zone type **Range:** On or Off

6. Silent Always

This option inhibit a 24 hour zone from energizing the bell output.

Note: this option also inhibits the keypad tone and alarm message display. PGMs will function if selected as an alarm output in menu 21-7.

Default: determined by zone type **Range:** On or Off

21-6 Zone Options 3

THESE EIGHT OPTIONS CAN BE USED TO INDIVIDUALLY CUSTOMIZE EACH ZONE.

1. Telephone

This option allows the security system to transmit all enabled zone reporting codes to the central station. These report codes include: alarm, trouble, bypass or restore condition.

Default: determined by zone type **Range:** On or Off

2. Bypass Allowed

This option allows the user to manually bypass zones upon arming and must be enabled to allow the alarm system to perform force arming.

(See User Manual, Zone Bypass; menu 31-1-3, Force Arm; menu 31-1-4, Force Arm on Auto Arm)

Default: determined by zone type **Range:** On or Off

3. Swinger Shutdown

This option allows the zone to be shunted (both bell and communicator) automatically by the alarm system during an armed period after one alarm condition has been generated. This bypass status will be reset 48 hours after alarm or by disarming the system..

Default: determined by zone type **Range:** On or Off

4. Display Armed

This option allows the zone to display on the keypad should an alarm condition occur during the armed period.

Default: determined by zone type **Range:** On or Off

5. Walk Test

This option allows the zone to be included in the walk test option. *(See User manual)*

Default: determined by zone type **Range:** On or Off

6. Chime

This option allows the zone to activate for local annunciation during the disarm period.

(See User Manual; menu 31-2-6, Auto Chime on Disarm)

Default: determined by zone type **Range:** On or Off

MENU 2 CHART

21- Zone Configuration

Select Zone Number

21-Z#-01 Zone Type

21-Z#-02 Loop Type

21-Z#-03 Loop Response

21-Z#-04 Zone Options 1

1. Entry Delay 1
2. Entry Delay 2
3. Exit Delay 1
4. Exit Delay 2
5. Ignore During Delay
6. Entry Follower
7. Final Door

21-Z#-05 Zone Options 2

1. Auto-Arm
2. Key-Switch Arm
3. Night Bypass
4. Day Zone
5. Silent Day/Aud. Night
6. Silent Always

21-Z#-06 Zone Options 3

1. Telephone
2. Bypass Allowed
3. Swinger Shutdown
4. Display Armed
5. Walk Test
6. Chime

21-Z#-07 Zone Options 4

7. Bell
8. Pulse Bell
1. PGM 1
2. PGM 2
3. PGM 3

21-Z#-08 Zone Options 5

1. Arming Area 1
2. Arming Area 2
3. Arming Area 3
4. Arming Area 4

21-9 Zone Name

MENU 2 CHART

Select Zone Number

- 21 Zone Configuration
- 21-Z#-01 Zone Type
- 21-Z#-02 Loop Type
- 21-Z#-03 Loop Response
- 21-Z#-04 Zone Options 1
 - 1. Entry Delay 1
 - 2. Entry Delay 2
 - 3. Exit Delay 1
 - 4. Exit Delay 2
 - 5. Ignore During Delay
 - 6. Entry Follower
 - 7. Final Door
- 21-Z#-05 Zone Options 2
 - 1. Auto-Arm
 - 2. Key-Switch Arm
 - 3. Night Bypass
 - 4. Day Zone
 - 5. Silent Day/Aud. Night
 - 6. Silent Always
- 21-Z#-06 Zone Options 3
 - 1. Telephone
 - 2. Bypass Allowed
 - 3. Swinger Shutdown
 - 4. Display Armed
 - 5. Walk Test
 - 6. Chime
 - 7. Bell
 - 8. Pulse Bell
- 21-Z#-07 Zone Options 4
 - 1. PGM 1
 - 2. PGM 2
 - 3. PGM 3
- 21-Z#-08 Zone Options 5
 - 1. Arming Area 1
 - 2. Arming Area 2
 - 3. Arming Area 3
 - 4. Arming Area 4
- 21-Z#-09 Zone Name

21 ZONE CONFIGURATION

7. Bell

This option allows the zone to energize the bell circuit on an alarm condition.
(See menu 12-1, Bell)

Default: determined by zone type **Range:** On or Off

8. Pulse Bell

This option allows the zone to energize the bell circuit in a pulsed fashion on an alarm condition.
(See menu 12-1, Bell)

Default: determined by zone type **Range:** On or Off

21-7 Zone Options 4 : PGM Outputs

*THE FOLLOWING THREE OPTIONS MAY BE USED TO INDIVIDUALLY ASSIGN THE PGM OUTPUTS FOR EACH ZONE.
 (SEE MENU 36, PGM OUTPUTS).*

1. PGM 1

This option allows the zone to energize PGM1 on activation. *(See menu 12-2, PGM 1)*

Default: Off **Range:** On or Off

2. PGM 2

This option allows the zone to energize PGM2 on activation. *(See menu 12-3, PGM 2)*

Default: Off **Range:** On or off

3. PGM 3

This option allows the zone to energize PGM3 on activation. *(See menu 12-4, PGM 3)*

Default: Off **Range:** On or off

21-8 Zone Options 5

This option assignss the zone to any combination of the four Arming Areas (for Area Arming).

Default: no areas **Range:** 1 2 3 4

21-9 Zone Naming

Select the character from the list below and press the corresponding number followed by the ON button. Use the D button to move the cursor forward across the LCD display and the C button to move the cursor backwards. To erase a character, either enter the number of the new character you wish to insert, or enter 32 to create a blank space. When finished, press Enter to save changes or # to exit without saving changes. The A button can be used to scroll forward through the list of letters and characters while the B button scrolls in reverse. OFF will clear all characters from the display.

32=Blank	51=3	70=F	89=Y	108=l
33=!	52=4	71=G	90=Z	109=m
34="	53=5	72=H	91=[110=n
35=#	54=6	73=I	92=\	111=o
36=\$	55=7	74=J	93=]	112=p
37=%	56=8	75=K	94=^	113=q
38=&	57=9	76=L	95=-	114=r
39='	58=:	77=M	96='	115=s
40=(59=:	78=N	97=a	116=t
41=)	60=<	79=O	98=b	117=u
42=*	61==	80=P	99=c	118=v
43=+	62=>	81=Q	100=d	119=w
44=,	63=?	82=R	101=e	120=x
45=-	64=@	83=S	102=f	121=y
46=.	65=A	84=T	103=g	122=z
47=/	66=B	85=U	104=h	123={
48=0	67=C	86=V	105=i	124=
49=1	68=D	87=W	106=j	125=}
50=2	69=E	88=X	107=k	126=◇
				127=↓

MENU 3 - SYSTEM OPTIONS

31 System Features

THESE SEVEN MENUS SET SYSTEM CHARACTERISTICS FOR THE SECURITY SYSTEM.

31-1 System Options 1

THESE EIGHT OPTIONS DETERMINE THE OPERATING CHARACTERISTICS OF THE SECURITY SYSTEM.

1. Need PIN to Arm

This option requires a valid user PIN to be entered to arm the security system.

Default: Off **Range: On or Off**

2. Need PIN to Bypass

This option require a valid user PIN entry in order to bypass zone(s) or to Force Arm.

(See menu 21-6-2, Bypass Allowed to select bypass for each zone)

Default: Off **Range: On or Off**

3. Force Arm

This option allows the security system to automatically bypass non-secure zones that have the "Bypass Allowed" option enabled in Zone Option 2. *(See menu 21-6-2, Bypass Allowed to select bypass for each zone)*

Note: This zone will become an active zone if the circuit resets during the armed period.

Default: Off **Range: On or Off**

4. Force Arm On Auto-Arming

This option allows the security system to Auto-Arm if there are zones in a non-secure condition that have the "Bypass Allowed" option enabled. *(See menu #21-6-2, Bypass Allowed to select bypass for each zone)*

Note: This zone will become an active zone if the circuit resets during the armed period.

Default: Off **Range: On or Off**

5. Quick Exit

This option disables all Door, Window, Interior, and Exterior Zones for two minutes to allow the user to perform a "Quick-Exit" from the premise without disarming the security system. The system automatically reverts to the original armed mode two minutes after the operation is performed.

Operation: [**↑**] + [0].

Default: On **Range: On or Off**

6. Default Installer PIN with Hardware Reset

This option allows the installer PIN to be reset to the factory default (9999) with the following hardware reset command. This command only resets the Installers code, other programming is unaffected.

It is not possible to default installer PIN if this option is turned OFF.

Operation: place a short between TP 12 and TP 14 for 5 seconds (+ / -)

Default: On **Range: On or Off**

7. Up-Arming Enabled

This option allows the user to arm additional parts of the alarm system while the system is armed. Up-Arming is only available with Zone Type and Area Arming Methods (See menu 32-1, Quad Key Options)

Default: On **Range: On or Off**

8. Exit Delay on Up-Arming

This option activates exit delays when an Up-Arm command is used.

Default: On **Range: On or Off**

MENU 3 CHART

- 31 System Features**
- 31-1 System Options 1**
 - 1. Need PIN to Arm
 - 2. Need PIN to Bypass
 - 3. Force-Arm
 - 4. Force-Arm on Auto Arm
 - 5. Quick-Exit
 - 6. Default Install PIN
 - 7. Up-Arming Enabled
 - 8. Exit Delay on Up-Arm
- 31-2 System Options 2**
 - 1. KP Tone on Entry
 - 2. KP Tone on Exit
 - 3. Bell on Entry
 - 4. Bell on Exit
 - 5. Automatic Bell Test
 - 6. Auto-Chime on Disarm
- 31-3 System Options 3**
 - 1. Crystal Clock
 - 2. AC Clock 50/60Hz
 - 3. Daylight Savings
- 32 Quad Key Functions**
- 32-1 Arming Method**
- 32-2 D Key Options**
- 33 Keypad Configuration**
- Select Keypad**
- 33-1 Keypad 1**
- 33-2 Keypad 2**
- 33-3 Keypad 3**
- 33-4 Keypad 4**
- 34-1 Keypad Alarms**
 - 1. KP Silent Panic
 - 2. KP Audible Panic
 - 3. KP Fire
 - 4. KP Emergency
- 35 PGM Input**
- 35-1 PGM (3) Type**
 - 0. Disabled (Output)
 - 1. Monetary Key-Switch
 - 2. Latching Key-Switch
 - 3. Box Tamper
 - 4. Sensor Tamper
- 36 PGM Output**
- 36-1 PGM (1) Type**
- 36-2 PGM (2) Type**
- 36-3 PGM (3) Type**
- 37 History Store \ Print**
 - 1. Alarm \ Restore
 - 2. Trouble \ Restore
 - 3. Open \ Close
 - 4. Timed Print History

MENU 3 CHART

- 31 System Features**
- 31-1 System Options 1**
 - 1. Need PIN to Arm
 - 2. Need PIN to Bypass
 - 3. Force-Arm
 - 4. Force-Arm on Auto Arm
 - 5. Quick-Exit
 - 6. Default Install PIN
 - 7. Up-Arming Enabled
 - 8. Exit Delay on Up-Arm
- 31-2 System Options 2**
 - 1. KP Tone on Entry
 - 2. KP Tone on Exit
 - 3. Bell on Entry
 - 4. Bell on Exit
 - 5. Automatic Bell Test
 - 6. Auto-Chime on Disarm
- 31-3 System Options 3**
 - 1. Crystal Clock
 - 2. AC Clock 50/60Hz
 - 3. Daylight Savings
- 32 Quad Key Functions**
- 32-1 Arming Method**
- 32-2 D Key Options**
- 33 Keypad Configuration**
- Select Keypad
- 33-1 Keypad 1**
- 33-2 Keypad 2**
- 33-3 Keypad 3**
- 33-4 Keypad 4**
- 34-1 Keypad Alarms**
 - 1. KP Silent Panic
 - 2. KP Audible Panic
 - 3. KP Fire
 - 4. KP Emergency
- 35 PGM Input**
- 35-1 PGM (3) Type**
 - 0. Disabled (Output)
 - 1. Monetary Key-Switch
 - 2. Latching Key-Switch
 - 3. Box Tamper
 - 4. Sensor Tamper
- 36 PGM Output**
- 36-1 PGM (1) Type**
- 36-2 PGM (2) Type**
- 36-3 PGM (3) Type**
- 37 History Store \ Print**
 - 1. Alarm \ Restore
 - 2. Trouble \ Restore
 - 3. Open \ Close
 - 4. Timed Print History

31 System Features

31-2 System Options 2

THESE SIX OPTIONS DETERMINE THE OUTPUT CHARACTERISTICS OF THE SECURITY SYSTEM INCLUDING KEYPAD TONES AND BELL.

1. Keypad Tone on Entry Delay

This option allows the Keypad Audible to energize during the Entry Delay period.

Default: On **Range: On or Off**

2. Keypad Tone on Exit Delay

This option allows the Keypad Audible to energize during the Exit Delay period.

Default: On **Range: On or Off**

3. Bell Output on Entry Delay

This option allows the Bell Output to energize during the Entry Delay.

Default: Off **Range: On or Off**

4. Bell Output on Exit Delay

This option allows the Bell Output to energize during the Exit Delay.

Default: Off **Range: On or Off**

5. Automatic Bell Test

This option energizes the Bell Output for 2 seconds once the exit delay has expired and the security system has armed.

Default: Off **Range: On or Off**

6. Auto Chime on Disarm

This option allows the system to automatically activate Chime Mode upon disarming.

Default: Off **Range: On or Off**

31-3 System Options 3

THESE THREE OPTIONS WILL DETERMINE THE OPERATING CHARACTERISTICS FOR THE ALARM SYSTEM CLOCK.

1. Crystal Clock Control

This option allows the system's internal crystal to control the clock operation.

Default: Off **Range: On or Off**

2. AC = 50 Hz

This option determines the operating frequency of the clock.

Default: Off (60Hz) **Range: On (50Hz) or Off (60Hz)**

3. Daylight Savings (USA)

This option allows the system to automatically adjust the clock to compensate for Daylight Savings Time.

Default: Off **Range: On or Off**

PROGRAMMING RECORD SHEET

Enter system times in Menu 1, sections 11 & 12.

Configure zones in Menu 2. First select the Zone Number, then set the Zone Type, Loop Type, and Response Time. Zone Options can be further customized for each zone in sections 21-4 through 21-6. Assign zones to PGMs and Arming Areas in sections 21-7 and 21-8. Assign names to each zone in section 21-9.

11-DELAY TIMES	DEFAULT	RANGE	ENTRY
11-1 PRE-ALARM	00 sec	00-99 sec	
11-2 ENTRY DELAY 1	45 sec	00-99 sec	
11-3 ENTRY DELAY 2	45 sec	00-99 sec	
11-4 EXIT DELAY 1	60 sec	00-99 sec	
11-5 EXIT DELAY 2	60 sec	00-99 sec	
12-CUTOFF TIMES	DEFAULT	RANGE	
12-1 BELL	10 MIN	00-99 MIN	
12-2 PGM 1 (0=5SEC)	10 MIN	00-99 MIN	
12-3 PGM 2 (0=5SEC)	10 MIN	00-99 MIN	
12-4 PGM 3 (0=5SEC)	10 MIN	00-99 MIN	

Menu 2- Select Zone Number and programming address.

21-ZONE CONFIGURATION	DEFAULT	RANGE	Z1	Z2	Z3	Z4	Z5	Z6	Z7	Z8
21-Z#-1 ZONE TYPE	VARIABLE	01-06								
21-Z#-2 LOOP TYPE	04	01-06								
21-Z#-3 LOOP RESPONSE	05x50MS	00-99								

Zone Type	Description	Default
01	Door	See 21-4 thru 21-6
02	Window	See 21-4 thru 21-6
03	Interior	See 21-4 thru 21-6
04	Exterior	See 21-4 thru 21-6
05	24 Hr	See 21-4 thru 21-6
06	Fire	See 21-4 thru 21-6

LOOP TYPE	DESCRIPTION	EOL REQUIREMENT
01	NC	YES (2 EOL)
02	NC	YES (1 EOL)
03	NC	No EOL
04	NO \ NC	YES (1 EOL)
05	NO	YES (1 EOL)
06	NO	No EOL

PRE-SET ZONE TYPES / DEFAULT OPTION SETTINGS

	(01)	(02)	(03)	(04)	(05)	(06)											
21-Z#-4 Zone Options 01	DOOR	WINDOW	INTERIOR	EXTERIOR	24HR	FIRE	RANGE	Z1	Z2	Z3	Z4	Z5	Z6	Z7	Z8		
1. ENTRY DELAY 1	ON			ON			ON\OFF										
2. ENTRY DELAY 2							ON\OFF										
3. EXIT DELAY 1	ON	ON	ON	ON			ON\OFF										
4. EXIT DELAY 2							ON\OFF										
5. IGNORE DURING DELAY							ON\OFF										
6. ENTRY FOLLOWER			ON				ON\OFF										
7. FINAL DOOR							ON\OFF										

PRE-SET ZONE TYPES / DEFAULT OPTION SETTINGS

	(01)	(02)	(03)	(04)	(05)	(06)											
21-Z#-5 Zone Options 02	DOOR	WINDOW	INTERIOR	EXTERIOR	24HR	FIRE	RANGE	Z1	Z2	Z3	Z4	Z5	Z6	Z7	Z8		
1. AUTO-ARM	ON	ON	ON				ON\OFF										
2. KEY-SWITCH ARM	ON	ON	ON				ON\OFF										
3. NIGHT BY-PASS							ON\OFF										
4. DAY ZONE							ON\OFF										
5. SILENT DAY/AUD NIGHT							ON\OFF										
6. SILENT ALWAYS							ON\OFF										

PRE-SET ZONE TYPES / DEFAULT OPTION SETTINGS

	(01)	(02)	(03)	(04)	(05)	(06)											
21-Z#-6 Zone Options 03	DOOR	WINDOW	INTERIOR	EXTERIOR	24HR	FIRE	RANGE	Z1	Z2	Z3	Z4	Z5	Z6	Z7	Z8		
1. TELEPHONE	ON	ON	ON		ON	ON	ON\OFF										
2. BYPASS ALLOWED	ON	ON	ON	ON	ON		ON\OFF										
3. SWINGER SHUNT	ON	ON	ON				ON\OFF										
4. DISPLAY ARMED	ON	ON	ON	ON	ON	ON	ON\OFF										
5. WALK TEST	ON	ON	ON	ON			ON\OFF										
6. CHIME	ON			ON			ON\OFF										
7. BELL OUTPUT	ON	ON	ON	ON	ON		ON\OFF										
8. PULSE BELL						ON	ON\OFF										

21-Z#-7 ZONE OPTIONS 4	DEFAULT	RANGE	Z1	Z2	Z3	Z4	Z5	Z6	Z7	Z8
1. PGM 1	OFF	ON\OFF								
2. PGM 2	OFF	ON\OFF								
3. PGM 3	OFF	ON\OFF								
21-Z#-8 ZONE OPTIONS 5	DEFAULT	RANGE	Z1	Z2	Z3	Z4	Z5	Z6	Z7	Z8
1. ARMING AREA 1	OFF	ON\OFF								
2. ARMING AREA 2	OFF	ON\OFF								
3. ARMING AREA 3	OFF	ON\OFF								
4. ARMING AREA 4	OFF	ON\OFF								
21-Z#-9 ZONE NAME	DEFAULT									
21-Z1-9 ZONE 01 NAME	01	- - - - -								
21-Z2-9 ZONE 02 NAME	02	- - - - -								
21-Z3-9 ZONE 03 NAME	03	- - - - -								
21-Z4-9 ZONE 04 NAME	04	- - - - -								
21-Z5-9 ZONE 05 NAME	05	- - - - -								
21-Z6-9 ZONE 06 NAME	06	- - - - -								
21-Z7-9 ZONE 07 NAME	07	- - - - -								
21-Z8-9 ZONE 08 NAME	08	- - - - -								

31-SYSTEM FEATURES	DEFAULT	RANGE	ENTRY
31-1 SYSTEM OPTIONS 1			
1. NEED PIN TO ARM	OFF	ON\OFF	
2. NEED PIN TO BYPASS	OFF	ON\OFF	
3. FORCE-ARM	OFF	ON\OFF	
4. FORCE ON AUTO-ARM	OFF	ON\OFF	
5. QUICK EXIT	ON	ON\OFF	
6. DEFAULT INSTALLER PIN	ON	ON\OFF	
7. UP-ARMING ENABLED	ON	ON\OFF	
8. EXIT DELAY ON UP-ARM	ON	ON\OFF	

	DEFAULT	RANGE	ENTRY
31-2 SYSTEM OPTIONS 2			
1. KEYPAD TONE ON ENTRY	OFF	ON\OFF	
2. KEYPAD TONE ON EXIT	OFF	ON\OFF	
3. BELL ON ENTRY	OFF	ON\OFF	
4. BELL ON EXIT	OFF	ON\OFF	
5. AUTOMATIC BELL TEST	ON	ON\OFF	
6. AUTO CHIME ON DISARM	ON	ON\OFF	

	DEFAULT	RANGE	ENTRY
31-3 SYSTEM OPTIONS 3			
1. CRYSTAL CLOCK CONTROL	OFF	ON\OFF	
2. AC = 50 HZ	OFF	ON\OFF	
3. DAYLIGHT SAVINGS (USA)	OFF	ON\OFF	

32 QUAD KEY FUNCTION	DEFAULT	RANGE	ENTRY
32-1 ARMING METHOD	01	01-03	
32-2 D KEY OPTIONS	01	00-03	
33 KEYPAD CONFIGURATION	DEFAULT	RANGE	ENTRY
33-1 KEYPAD 1	1 2 3	1 2 3	
33-2 KEYPAD 2	- 2 3	1 2 3	
33-3 KEYPAD 3	- 2 3	1 2 3	
33-4 KEYPAD 4	- 2 3	1 2 3	

34 KEYPAD ALARMS	DEFAULT	RANGE	ENTRY
SELECT KEYPAD NUMBER			
34-1 KEYPAD ALARMS			
1. KP SILENT PANIC	OFF	ON\OFF	
2. KP AUDIBLE PANIC	OFF	ON\OFF	
3. KP FIRE	OFF	ON\OFF	
4. KP EMERGENCY	OFF	ON\OFF	

35 PGM 3 INPUT	DEFAULT	RANGE	ENTRY
35-1 PGM TYPE	00	00-04	

QUAD KEY FUNCTIONS	D KEY OPTIONS
01 Zone Type Arming	00 Disabled
02 Mode Type Arming	01 Exterior Zones
03 Area Arming	02 Night Bypass
	03 Arming Area 4

PGM 3 FUNCTIONS
00 DISABLED
01 MONETARY KEY-SWITCH
02 LATCHING KEY-SWITCH
03 BOX TAMPER
04 SENSOR TAMPER

36-PGM OUTPUT	DEFAULT	RANGE	ENTRY
36-1 PGM 1	00	00-20	
36-2 PGM 2	00	00-20	
36-3 PGM 3	00	00-20	
37-HISTORY STORE \ PRINT	DEFAULT	RANGE	ENTRY
37-1 HISTORY STORE \ PRINT			
1. ALARM \ RESTORE	ON	ON\OFF	
2. TROUBLE \ RESTORE	ON	ON\OFF	
3. OPEN \ CLOSE	OFF	ON\OFF	
4. TIMED PRINT HISTORY	OFF	ON\OFF	

41-PINS	DEFAULT	RANGE	ENTRY
41-1 INSTALLER PIN	9999	0000-9999	
41-2 DURESS PIN	FFFF	0000-9999	
41-3 USER 1 PIN	1234	0000-9999	

61 RECEIVER 1	DEFAULT	RANGE	ENTRY
1. TELEPHONE NUMBER	FFFFFFFFFFFFFF	0-9	
2. ACCOUNT NUMBER	FFFF	0000-FFFF	
3. RECEIVER FORMAT	01	01-15	
4. DIAL ATTEMPTS	12	01-15	
62 RECEIVER 2	DEFAULT	RANGE	ENTRY
1. TELEPHONE NUMBER	FFFFFFFFFFFFFF	0-9	
2. ACCOUNT NUMBER	FFFF	0000-FFFF	
3. RECEIVER FORMAT	01	01-15	
4. DIAL ATTEMPTS	12	01-15	

63 RECEIVER OPTIONS	DEFAULT	RANGE	ENTRY
63-1 ALARM OPTIONS	04	00-04	
63-2 OPEN CLOSE OPTIONS	04	00-04	
63-3 SYSTEM OPTIONS	04	00-04	

64 DIAL FEATURES	DEFAULT	RANGE	ENTRY
64-1 DIAL FEATURES			
1. TOUCH TONE (ON) OR ROTARY (OFF)	ON (TT)	ON\OFF	
2. ROTARY FALLBACK	ON	ON\OFF	
3. 2300Hz (ON) OR 1400Hz (OFF) TONES	OFF	ON\OFF	
4. TLM	OFF	ON\OFF	
64-2 DELAY BEFORE DIAL	60 SEC	00-99 SEC	
64-3 ANTI JAM	00 SEC	00-99 SEC	
64-4 AC FAIL DELAY	01 MIN	00-99 MIN	

65 SELF TEST	DEFAULT	RANGE	ENTRY
65-1 FIXED \ START TIME	00:00	00:00-23:59	
65-2 TEST OPTION	00	00-02	

66 PERSONAL ALARM CALL	DEFAULT	RANGE	ENTRY
66-1 TELEPHONE NUMBER	FFFFFFFFFFFFFF	0-9	
66-2 TONE 1 ASSIGNMENT	1 2 -	1 2 3	
66-3 TONE 2 ASSIGNMENT	3	1 2 3	
66-4 REPORT TONE DURATION	60	01-99	

PGM OPTIONS	
00	Disabled
01	Ground Start
02	Utility w/PIN
03	Utility w/o PIN
04	Entry/Exit Follower
05	Follow Keypad Tone
06	Follow Bell
07	Follow Armed Status
08	Follow Disarmed Status
09	Any Alarm Condition
10	Any Trouble Condition
11	Any Open Zone
12	Zone Alarm
13	Keypad Panic
14	Keypad or Zone Fire
15	Keypad Emergency
16	Latch on Alarm
17	Reset w/Switched Aux
18	Random Generator
19	Alarm Memory Indicator
20	PGM 1 for 2-Wire Smokes (selectable for pgm 1 only)

RECEIVER OPTIONS	
00	Both Receivers Disabled
01	Receiver 1 Only
02	Receiver 2 Only
03	Both Receivers 1 & 2
04	Receiver 1 w/Receiver 2 as Back-up

PERSONAL CALL ASSIGNMENTS	
1	Zone Alarms/Restores/Troubles
2	System Troubles/Trouble Restores
3	Open & Close

67-PAGER	DEFAULT	RANGE	ENTRY
67-1 TELEPHONE NUMBER	--	1 2 3	
67-3 RANGE / ALARM CODE	01FF	0000-FFFF	
67-4 RANGE / TROUBLE CODE	01FF	0000-FFFF	
67-5 RANGE / OPEN / CLOSE CODE	01FF	0000-FFFF	
67-6 ACCT NUMBER ALARM	FFFF	0000-FFFF	
67-7 ACCT NUMBER TROUBLE	FFFF	0000-FFFF	
67-8 ACCT NUMBER OPEN / CLOSE	FFFF	0000-FFFF	
67-9 PAGER DELAY	10	01-20	

71 ZONE REPORT CODES	DEFAULT	RANGE	Z1	Z2	Z3	Z4	Z5	Z6	Z7	Z8	
71-1 ZONE ALARM	00	00-FF									
71-2 ZONE TROUBLE	00	00-FF									
71-3 ZONE BYPASS	00	00-FF									
71-4 ZONE RESTORE	00	00-FF									
72 KEYPAD REPORT CODES	DEFAULT	RANGE	ENTRY								
72-1 KEYPAD PANIC	00	00-FF									
72-2 KEYPAD FIRE	00	00-FF									
72-3 KEYPAD EMERGENCY	00	00-FF									
73 USER ARM REPORT CODES	DEFAULT	RANGE	Z1	Z2	Z3	Z4	Z5	Z6	Z7	Z8	
73-1 USER OPEN	00	00-FF									
73-2 USER CLOSE	00	00-FF									

74 TROUBLE REPORT CODES (1)	DEFAULT	RANGE	ENTRY
74-1 AC FAIL	00	00-FF	
74-2 AC FAIL RESTORE	00	00-FF	
74-3 LOW BATTERY	00	00-FF	
74-4 BATTERY RESTORE	00	00-FF	
74-5 BOX TAMPER	00	00-FF	
74-6 BOX TAMPER RESTORE	00	00-FF	
74-7 BELL FAULT TROUBLE	00	00-FF	
74-8 BELL FAULT RESTORE	00	00-FF	
75 TROUBLE REPORT CODES (2)	DEFAULT	RANGE	ENTRY
75-1 BUS FAIL	00	00-FF	
75-2 BUS FAIL RESTORE	00	00-FF	
75-3 AUX POWER TROUBLE	00	00-FF	
75-4 AUX POWER RESTORE	00	00-FF	
75-5 CLOCK TROUBLE	00	00-FF	
75-6 CLOCK RESTORE	00	00-FF	
75-7 TELEPHONE TROUBLE	00	00-FF	
75-8 TELEPHONE RESTORE	00	00-FF	
76 TROUBLE REPORT CODES (3)	DEFAULT	RANGE	ENTRY
76-1 SENSOR TAMPER TROUBLE	00	00-FF	
76-2 SENSOR TAMPER RESTORE	00	00-FF	
76-3 COMMUNICATION FAIL	00	00-FF	

76 TROUBLE REPORT CODES (3)	DEFAULT	RANGE	ENTRY
76-1 SENSOR TAMPER TROUBLE	00	00-FF	
76-2 SENSOR TAMPER RESTORE	00	00-FF	
76-3 COMMUNICATION FAIL	00	00-FF	
77 OTHER REPORT CODES (1)	DEFAULT	RANGE	ENTRY
77-1 DURESS	00	00-FF	
77-2 CANCEL	00	00-FF	
77-3 AUTO ARM	00	00-FF	
77-4 FAIL TO AUTO ARM	00	00-FF	
78 OTHER REPORT CODES (2)	DEFAULT	RANGE	ENTRY
78-1 FORCE ARM	00	00-FF	
78-2 REMOTE ARM (RPU)	00	00-FF	
78-3 REMOTE DISARM (RPU)	00	00-FF	
78-4 FULL ARM	00	00-FF	
78-5 PARTIAL ARM	00	00-FF	
79 2-WIRE SMOKE REPORT CODES	DEFAULT	RANGE	ENTRY
79-1 2-WIRE SMOKE ALARM	00	00-FF	
79-2 2-WIRE SMOKE TROUBLE	00	00-FF	
79-3 2-WIRE SMOKE RESTORE	00	00-FF	

81-DOWNLOAD (RPU)	DEFAULT	RANGE	ENTRY
81-1 TELEPHONE NUMBER	FFFFFFFFFFFFFFFF	0-9	
81-2 PANEL ACCESS ID	FFFF	0000-FFFF	
81-3 LOCAL RPU PIN	FFFF	0000-FFFF	
81-4 RPU FEATURES	--	1 2	
1. DOUBLE CALLING	OFF	ON\OFF (# DISPLAYED =ON)	
2. CALL BACK	OFF	ON\OFF (# DISPLAYED = ON)	
81-5 NUMBER OF RING	12	00-FF	
81-6 DOUBLE CALL WAIT TIME	60 SEC	00-99 SEC	

MENU 3 CHART

- 31 System Features
- 31-1 System Options 1
 - 1. Need PIN to Arm
 - 2. Need PIN to Bypass
 - 3. Force-Arm
 - 4. Force-Arm on Auto Arm
 - 5. Quick-Exit
 - 6. Default Install PIN
 - 7. Up-Arming Enabled
 - 8. Exit Delay on Up-Arm
- 31-2 System Options 2
 - 1. KP Tone on Entry
 - 2. KP Tone on Exit
 - 3. Bell on Entry
 - 4. Bell on Exit
 - 5. Automatic Bell Test
 - 6. Auto-Chime on Disarm
- 31-3 System Options 3
 - 1. Crystal Clock
 - 2. AC Clock 50/60Hz
 - 3. Daylight Savings
- 32 Quad Key Function
- 32-1 Arming Method
- 32-2 D Key Options
- 33 Keypad Configuration
- Select Keypad
- 33-1 Keypad 1
- 33-2 Keypad 2
- 33-3 Keypad 3
- 33-4 Keypad 4
- 34-1 Keypad Alarms
 - 1. KP Silent Panic
 - 2. KP Audible Panic
 - 3. KP Fire
 - 4. KP Emergency
- 35 PGM Input
- 35-1 PGM (3) Type
 - 0. Disabled (Output)
 - 1. Monetary Key-Switch
 - 2. Latching Key-Switch
 - 3. Box Tamper
 - 4. Sensor Tamper
- 36 PGM Output
- 36-1 PGM (1) Type
- 36-2 PGM (2) Type
- 36-3 PGM (3) Type
- 37 History Store \ Print
 - 1. Alarm \ Restore
 - 2. Trouble \ Restore
 - 3. Open \ Close
 - 4. Timed Print History

33 KEYPAD CONFIGURATIONS

THESE THREE OPTIONS DETERMINE THE OPERATING CHARACTERISTICS FOR EACH KEYPAD.

SELECT KEYPAD NUMBER (SELECT THE KEYPAD NUMBER YOU WISH TO PROGRAM).

33-1 Keypad 1

Select each of the keypad characteristics from the 3 options listed below.

Default: 1 2 3 **Range:** 1 2 3

1. Keypad Enabled

The data bus for the keypads is a supervised output which requires that each keypad be addressed with the dip switches on the back of each keypad. The keypads must also be enabled in the installers program. The alarm system will generate a trouble condition if this option is not correctly programmed.

Note: Keypad 1 cannot be disabled.

2. Keypad Audible

This option will allow the keypad to be silent on entry, exit, trouble, alarm and Walk Test.

3. Keypad Chime

This option will determine if the keypad will be silent or energize a tone during the Chime mode. (See menu 31-2-6, Auto Chime on Disarm).

33-2 Keypad 2

Select each of the keypad characteristics from the 3 options listed above.

Default: 2 3 **Range:** 1 2 3

33-3 Keypad 3

Select each of the keypad characteristics from the 3 options listed above.

Default: 2 3 **Range:** 1 2 3

33-4 Keypad 4

Select each of the keypad characteristics from the 3 options listed above.

Default: 2 3 **Range:** 1 2 3

34 KEYPAD ALARMS

THESE FOUR OPTIONS DETERMINE THE KEYPAD ALARM CHARACTERISTICS FOR THE SECURITY SYSTEM.

34-1 Keypad Alarms

1. Keypad Panic Silence

This option will allow the *Silent Keypad Panic Alarm* to be initiated by simultaneously pressing (2) + (3) for 2 seconds (+\-) at any keypad. This option will energize PGM Outputs and report codes if programmed.

(See menu 72-1, Keypad Alarm; 36-3-13, PGM 3 Output-KP Panic)

Default: Off **Range:** On or Off

2. Keypad Panic Audible

This option will allow an *Audible Keypad Panic Alarm* to be initiated by simultaneously pressing (2) + (3) for 2 seconds (+\-) at any keypad. This option will energize the bell output, PGM Output, keypad audible, keypad display, and report code if programmed.

(See menu 72-1, Keypad Alarm; 36-3-13, PGM 3 Output-KP Panic)

Default: Off **Range:** On or Off

Menu 3 - System Options

34 KEYPAD ALARMS

34-1 Keypad Alarms

3. Keypad Fire Alarm

This option will allow a *Keypad Fire Alarm* to be initiated by simultaneously pressing (5) + (6) for 2 seconds (+/-) at any keypad. This option will energize the **pulsed** bell output, PGM Output, keypad beep sounds, keypad display and transmit the Fire report code if enabled in menu #72-2.

(See menu 36-3-14, PGM 3 Output-KP and Zone Fire Alarm)

Default: Off Range: On or Off

4. Keypad Emergency

This option will allow a *Keypad Emergency Alarm* to be initiated by simultaneously pressing (8) + (9) for 2 seconds (+/-) at any keypad. This option will energize the steady bell output, PGM Output, keypad audible, keypad display and will transmit the Emergency report code if enabled in menu #72-3.

(See menu 36-3-15, PGM 3 Output-KP Emergency Alarm)

Default: Off Range: On or Off

35 PGM-INPUT

THIS OPTION DETERMINES THE OPERATING CHARACTERISTICS OF PGM 3. THIS PGM MAY BE USED AS AN OUTPUT OR YOU MAY SELECT ONE OF THE INPUT OPTIONS LISTED BELOW.

35-1 PGM 3 Type

Default: 00 Range: 00-04

00. Disabled (Output)

The terminals for PGM 3 will be used as an output.

01. Momentary Key-Switch Input

The terminals for PGM 3 will be used as an auxiliary input for a momentary arming device.

02. Latching Key-Switch Input

The terminals for PGM 3 will be used as an auxiliary input for a latching arming device.

03. Box Tamper Input

The terminals for PGM 3 will be used as an auxiliary input for a cabinet tamper that will transmit the Box Tamper Report Code and indicate a trouble condition at keypads. (See menu 74-5, Box Tamper)

04. Sensor Tamper Input

The terminals for PGM 3 will be used as an auxiliary input for a sensor tamper that will transmit the Sensor Tamper Loop Trouble Report Code with no indication at keypads..

(See menu 76-1, Sensor Tamper)

36 PGM-OUTPUTS

THESE THREE ITEMS DETERMINE THE OPERATING CHARACTERISTICS FOR EACH OF THE PGM OUTPUTS. THESE OUTPUTS ARE LOW CURRENT TRANSISTOR OUTPUTS THAT SINKS TO GROUND ON ACTIVATION.

WARNING: CARE MUST BE TAKEN NOT TO EXCEED 50MA CURRENT DRAW.

36-1 PGM 1 Type

You may select one of the following options from the chart on page 21.

Default: 00 Range: 00-20

36-2 PGM 2 Type

You may select one of the following options from the chart on page 21.

Default: 00 Range: 00-19

MENU 3 CHART

31 System Features

31-1 System Options 1

1. Need PIN to Arm
2. Need PIN to Bypass
3. Force-Arm
4. Force-Arm on Auto Arm
5. Quick-Exit
6. Default Install PIN
7. Up-Arming Enabled
8. Exit Delay on Up-Arm

31-2 System Options 2

1. KP Tone on Entry
2. KP Tone on Exit
3. Bell on Entry
4. Bell on Exit
5. Automatic Bell Test
6. Auto-Chime on Disarm

31-3 System Options 3

1. Crystal Clock
2. AC Clock 50/60Hz
3. Daylight Savings

32 Quad Key Function

32-1 Arming Method

32-2 D Key Options

33 Keypad Configuration

Select Keypad

33-1 Keypad 1

33-2 Keypad 2

33-3 Keypad 3

33-4 Keypad 4

34-1 Keypad Alarms

1. KP Silent Panic
2. KP Audible Panic
3. KP Fire
4. KP Emergency

35 PGM Input

35-1 PGM (3) Type

0. Disabled (Output)
1. Monetary Key-Switch
2. Latching Key-Switch
3. Box Tamper
4. Sensor Tamper

36 PGM Output

36-1 PGM (1) Type

36-2 PGM (2) Type

36-3 PGM (3) Type

37 History Store \ Print

1. Alarm \ Restore
2. Trouble \ Restore
3. Open \ Close
4. Timed Print History

MENU 3 CHART

- 31 System Features**
- 31-1 System Options 1**
 - 1. Need PIN to Arm
 - 2. Need PIN to Bypass
 - 3. Force-Arm
 - 4. Force-Arm on Auto Arm
 - 5. Quick-Exit
 - 6. Default Install PIN
 - 7. Up-Arming Enabled
 - 8. Exit Delay on Up-Arm
- 31-2 System Options 2**
 - 1. KP Tone on Entry
 - 2. KP Tone on Exit
 - 3. Bell on Entry
 - 4. Bell on Exit
 - 5. Automatic Bell Test
 - 6. Auto-Chime on Disarm
- 31-3 System Options 3**
 - 1. Crystal Clock
 - 2. AC Clock 50/60Hz
 - 3. Daylight Savings
- 32 Quad Key Options**
- 32-1 Arming Method**
- 32-2 D Key Function**
- 33 Keypad Configuration**
- Select Keypad**
- 33-1 Keypad 1**
- 33-2 Keypad 2**
- 33-3 Keypad 3**
- 33-4 Keypad 4**
- 34-1 Keypad Alarms**
 - 1. KP Silent Panic
 - 2. KP Audible Panic
 - 3. KP Fire
 - 4. KP Emergency
- 35 PGM Input**
- 35-1 PGM (3) Type**
 - 0. Disabled (Output)
 - 1. Monetary Key-Switch
 - 2. Latching Key-Switch
 - 3. Box Tamper
 - 4. Sensor Tamper
- 36 PGM Output**
- 36-1 PGM (1) Type**
- 36-2 PGM (2) Type**
- 36-3 PGM (3) Type**
- 37 History Store \ Print**
 - 1. Alarm \ Restore
 - 2. Trouble \ Restore
 - 3. Open \ Close
 - 4. Timed Print History

36 PGM-OUTPUTS

36-3 PGM 3 Type

You may select one of the following options from the chart below. (See menu 35-1, PGM 3 Type)

Note: Programming Option 35-1 must be set at 00 for PGM 3 to operate as an Output terminal. If 35-1 is programmed as an Input terminal, this field (36-3) will not affect PGM 3.

Default: 00 **Range:** 00-19

PGM OUTPUT PROGRAMMING OPTIONS CHART

#	PROGRAM OPTION	DESCRIPTION
00	NULL	DISABLED
01	GROUND START	USED TO ACTIVATE A RELAY PRODUCING A 2 SEC. GROUND ON TIP OR RING.
02	UTILITY PIN	OUTPUT TRIGGERED BY UTILITY PIN (SEE USER PROGRAMMING ITEM 3 *
03	UTILITY WITHOUT PIN	OUTPUT TRIGGERED BY [^] + [9]*
04	ENTRY \ EXIT FOLLOWER	OUTPUT WILL FOLLOW ENTRY EXIT TIME.
05	FOLLOWER ON BEEP	OUTPUT WILL FOLLOW KEYPAD TONE.
06	FOLLOWER BELL	OUTPUT WILL FOLLOW BELL OUTPUT.
07	ARMED OUTPUT	OUTPUT WILL FOLLOW ARMED PERIOD.
08	DISARMED OUTPUT	OUTPUT WILL FOLLOW DISARM PERIOD.
09	ANY ALARM CONDITION	OUTPUT WILL BE ACTIVE IF ANY ZONE IS IN AN ALARM CONDITION. PGM DURATION FOLLOWS PGM CUTOFF TIME.*
10	ANY TROUBLE CONDITION	OUTPUT WILL BE ACTIVE FOR ANY TROUBLE CONDITION.
11	ZONE OPEN	OUTPUT WILL BE ACTIVE FOR ZONES THAT HAVE ZONE OPTION 4 ENABLED *
12	ZONE ALARM	OUTPUT WILL BE ACTIVE IF A ZONE PROGRAMMED FOR PGM OUTPUT IS IN AN ALARM CONDITION. PGM DURATION FOLLOWS PGM CUTOFF TIME.
13	KP PANIC	OUTPUT WILL BE TRIGGERED BY THE KEYPAD PANIC FUNCTION*
14	KP AND ZONE FIRE ALARM	OUTPUT WILL BE TRIGGERED BY THE KEYPAD FIRE FUNCTION & FIRE ZONE*
15	KP EMERGENCY ALARM	OUTPUT WILL BE TRIGGERED BY THE KEYPAD EMERGENCY FUNCTION*
16	ALARM LATCHING	OUTPUT WILL REMAIN LATCHED UNTIL THE SYSTEM IS DISARMED.
17	RESET SWITCHED AUX.	OUTPUT WILL RESET WHEN [^] + [2] IS PRESSED. (APP. 10 SECS.)
18	RANDOM GENERATOR	OUTPUT WILL RANDOMLY TRIGGER EVERY 10 MINUTES STARTING WITH INITIAL POWER UP WITH RANDOM ON TIMES RANGING FROM 1 - 10 MINUTES.*
19	ALARM MEMORY	OUTPUT WILL REMAIN ON WHEN AN ALARM CONDITION HAS BEEN GENERATED. RESETS WHEN ALARM MEMORY IS CLEARED
20	ENABLE PGM 1 FOR 2 WIRE SMOKE DETECTORS	SEE WIRING DIAGRAM AND PAGE 6 FOR ADDITIONAL CONFIGURATION REQUIREMENTS.

*These PGM options follow the PGM Cut-Off Time programmed in 12-2, 12-3, 12-4

37 HISTORY STORAGE / PRINT OUT

THE INFORMATION CONTAINED IN THE FOLLOWING FOUR MENUS DETERMINE WHICH EVENTS WILL BE STORED IN MEMORY WITH A TIME & DATE STAMP OR PRINTED IN REAL TIME TO AN ON-SITE PRINTER.

1. Any Zone Alarm/Restore/Trouble or System Alarm

This option enables all Zone Alarms, Restores, Zone Troubles and Keypad Alarms or Duress Alarms to be stored and printed.

Default: On

Range: On or Off

2. Any System Trouble/Restore

This option enables all System Troubles and Restores to be stored and printed.

Default: On

Range: On or Off

3. Open/Close

This option enable all Open and Close activities to be stored and printed.

Default: Off

Range: On or Off

4. Print History Event In Real Time

This option allows an event to print to a serial printer as it occurs. If OFF is selected, the history may be printed using Installers Option 5. An LCD keypad must be installed on the system to operate printer.

Default: Off

Range: On or Off

MENU 4 - PIN NUMBERS

THESE THREE ITEMS DETERMINE PINs USED TO ACCESS THE SECURITY SYSTEM.

41 PIN Codes

THIS OPTION ADDS OR DELETES SYSTEM PINs.

NOTE: PINs MAY NOT BE DUPLICATED. (SEE USER MANUAL FOR THE PROGRAMMING OF ARM/DISARM PINs).

41-1 Installer PIN

This PIN is needed to access the installer's program. This PIN may be changed or left at the factory default. (See default Installers PIN / Default Installer Program)

Default: 9999 **Range:** 0000-9999

41-2 Duress PIN

This PIN is used for disarming under a duress condition. A duress report code will be transmitted to the central station when this PIN is employed. Press the OFF key to delete numbers from the Duress PIN. (See menu 77-1, Duress)

Default: blank **Range:** 0000-9999

41-3 User #1 PIN

This PIN cannot be changed in this location and may only be reviewed.

Default: 1234 **Range:** 0000-9999

MENU 4 CHART

- 41 PINs
- 41-1 Installer PIN
- 41-2 Duress PIN
- 41-3 User 1 PIN

MENU 6 - RECEIVER

61/62 RECEIVER 1 & Receiver 2

THESE FOUR ITEMS SET THE OPERATING CHARACTERISTICS FOR EACH CENTRAL STATION OUTPUT. ITEMS FOR SECTION 61 (RECEIVER 1) AND SECTION 62 (RECEIVER 2) ARE IDENTICAL

61-1 Telephone Number

Select up to sixteen digits or characters the security system will need to dial to reach the central station. Press the OFF key to delete characters or numbers from the telephone number.

Default: FFFFFFFFFFFFFFFF **Range:** 0 - 9

DIALING CHARACTERS
: = 3 SECOND DELAY
; = 5 SECOND DELAY WITH TONE DETECT OVERRIDE
* = *
=

BUTTON	ACTION
A	SCROLLS DIALING CHARACTERS BACKWARD
B	SCROLLS DIALING CHARACTERS FORWARD
C	ADVANCE CURSOR
D	REVERSE CURSOR
OFF	CLEAR DISPLAY

61-2 Account Number

Enter a maximum of four digits for the account number. This account may contain a combination of numeric and hex characters.

Default: FFFF **Range:** 0000-FFFF

61-3 Receiver Format

Select a receiver format.

Default: 01 **Range:** 01-15

Note: Selecting Radio (Option 15) automatically programs PGM 2 for Key and PGM 3 for Modulation.

OPTION	FORMAT	OPTION	FORMAT
01	SIA	09	20PPS 3-1
02	CONTACT ID	10	20PPS 3-1 EXT
03	10PPS 3-1EXT	11	20PPS 4-1
04	10PPS 3-1EXT	12	20PPS 4-2
05	10PPS 4-1	13	40PPS 3-1 w/PARITY
06	10PPS 4-1 EXT	14	VFSK 4-2
07	10PPS 4-2	15	VFSK 4-2 RADIO
08	20PPS 3-1		ONLY REC. 2 (62-3)

61-4 Dial Attempts

Select the number of times the security system will attempt to reach the central station. This option also sets the number of radio transmissions for Radio Reporting.

Default: 12 **Range:** 01-15

MENU 6 CHART

61 Receiver 1

1. Telephone Number
2. Account Number
3. Receiver Format
4. Dial Attempts

62 Receiver 2

1. Telephone Number
2. Account Number
3. Receiver Format
4. Dial Attempts

63 Receiver Options

- 63-1 Alarm Reports
- 63-2 Open/Close Reports
- 63-3 System Code Report

64 Dial Features

- 64-1 Dial Features
 1. TT or Rotary
 2. Rotary Fallback
 3. 2300Hz Tones
 4. TLM

64-2 Delay Before Dial

64-3 Anti Jam

64-4 AC-Fail Delay

65 Self Test

65-1 Fixed \ Start Time

65-2 Test Signal Options

66 Personal Alarm Call

66-1 Telephone Number

66-2 Tone 1 Assignment

66-3 Tone 2 Assignment

66-4 Report Tone Duration

67 Pager

67-1 Telephone Number

67-2 Message Assignment

67-3 Report Range-Alarm

67-4 Report Range- Trouble

67-5 Report Range- O/C

67-6 Acct Number Alm

67-7 Acct Number Trbl

67-8 Acct Number O/C

67-9 Pager Delay

MENU 6 CHART

- 61 Receiver 1**
 - 1. Telephone Number
 - 2. Account Number
 - 3. Receiver Format
 - 4. Dial Attempts
- 62 Receiver 2**
 - 1. Telephone Number
 - 2. Account Number
 - 3. Receiver Format
 - 4. Dial Attempts
- 63 Receiver Options**
 - 63-1 Alarm Reports
 - 63-2 Open/Close Reports
 - 63-3 System Code Report
- 64 Dial Features**
 - 64-1 Dial Features
 - 1. TT or Rotary
 - 2. Rotary Fallback
 - 3. 2300Hz Tones
 - 4. TLM
 - 64-2 Delay Before Dial
 - 64-3 Anti Jam
 - 64-4 AC-Fail Delay
- 65 Self Test**
 - 65-1 Fixed \ Start Time
 - 65-2 Test Signal Options
- 66 Personal Alarm Call**
 - 66-1 Telephone Number
 - 66-2 Tone 1 Assignment
 - 66-3 Tone 2 Assignment
 - 66-4 Report Tone Duration
- 67 Pager**
 - 67-1 Telephone Number
 - 67-2 Message Assignment
 - 67-3 Report Range-Alarm
 - 67-4 Report Range- Trouble
 - 67-5 Report Range- O/C
 - 67-6 Acct Number Alm
 - 67-7 Acct Number Trbl
 - 67-8 Acct Number O/C
 - 67-9 Pager Delay

63 RECEIVER OPTIONS

- 63-1 Alarm Reporting Options**
This option determines the reporting characteristics of the alarm codes. Select one option from the chart below.
Default: 04 Range: 00-04
- 63-2 Open & Close Reporting Options**
This option determines the reporting characteristics of the open & close codes. Select one option from the chart below.
Default: 04 Range: 00-04
- 63-3 System Code Reporting Options**
This option determines the reporting characteristics of the system report codes. Select one option from the chart below.
Default: 04 Range: 00-04

OPTION	SELECTION
00	BOTH RECEIVER OUTPUTS DISABLED
01	RECEIVER 1 ONLY
02	RECEIVER 2 ONLY
03	BOTH RECEIVER 1 & 2
04	RECEIVER 1 WITH RECEIVER 2 AS BACKUP.

64 DIAL FEATURES

THESE FOUR OPTIONS DETERMINE THE OPERATING CHARACTERISTICS OF THE DIGITAL COMMUNICATOR.

- 64-1 Dial Features**
 - 1. Touch Tone Dialing**
This option determines the method of dialing for the alarm system. On for Touch Tone, Off for Rotary.
Default: On Range: On (tt) or Off(r)
 - 2. Fall Back to Rotary**
This option allows the communicator to dial in a rotary tones after one unsuccessful touch tone dial attempt.
Default: On Range: On or Off
 - 3. 2300Hz Handshake**
This option determines the frequency of handshake tones used for PPS Formats.
Default: Off Range: On (2300Hz) or Off (1400Hz)
 - 4. Telephone Line Monitor (TLM)**
This option allows the panel to monitor the telephone line for loss or cut.
Default: Off Range: On or Off
- 64-2 Delay Before Dial**
This option gives users time to abort the transmission of an accidental alarm activation. This delay is does not effect Keypad Alarms, Fire Alarms or Duress Signals.
Default: 60 seconds Range: 00 - 99 seconds
- 64-3 Anti-Jam Time**
This is the time required by the telephone company to disconnect an incoming call and reestablish dial tone.
Default: 00 seconds Range: 00 - 99 seconds
- 64-4 AC Fail Dial Delay**
Assign a delay period before sending AC Failure Report Code to the central station.
Default: 01 (10 minutes) Range: 00 - 99 x 10 min.

MENU 6 - RECEIVER

65 SELF TEST

THESE TWO OPTIONS DETERMINE THE OPERATING CHARACTERISTICS FOR THE SELF TEST FUNCTION.
(SEE MENU 77-5, SELF TEST; 77-6, ABNORMAL TEST)

65-1 Fixed Start Time

This option sets the exact time the security system shall transmit the self test report code to the monitoring station. This entry is made in military time (1:00PM = 1300).

Note: Option 01 must be selected in menu 65-2, Test Option for this option to function.

Default: 00:00 **Range:** 00:00 to 23:59

65-2 Test Option

This option determines the frequency of the self test option. (See chart below)

Default: 00 **Range:** 00-02

#	Option	Description
00	Disabled	Disabled
01	Fixed time daily	The panel will transmit the self test code at the time period programmed in menu 65-1.
02	24Hr after last call	The panel will transmit the self test code 24 hours after the last signal transmission.

66 PERSONAL ALARM CALL

THESE FOUR ITEMS ALLOW THE SYSTEM TO CALL THE USER AND ALERT THEM OF ACTIVITY AT THE PREMISE.

66-1 Telephone Number

Select up to sixteen digits or characters the security system will need to dial to report an event. Press the OFF key to delete characters or numbers from the telephone number.

Default: FFFFFFFFFFFFFFFF **Range:** 0-9 (16 digit max.)

66-2 Tone 1 Assignment

Select which of the following types of events will be reported using Tone 1.

1. Alarms and Restores
2. System Troubles and Restores
3. Openings and Closings

Default: 1 2 **Range:** 1 2 3

BUTTON	ACTION
A	SCROLLS DIALING CHARACTERS BACKWARD
B	SCROLLS DIALING CHARACTERS FORWARD
C	ADVANCE CURSOR
D	REVERSE CURSOR
OFF	CLEAR DISPLAY

66-3

Tone 2 Assignment

Select which of the following types of events will be reported using Tone 2.

1. Alarms and Restores
2. System Troubles and Restores
3. Openings and Closings

Default: 3 **Range:** 1 2 3

DIALING CHARACTERS
: = 3 SECOND DELAY
; = 5 SECOND DELAY WITH TONE DETECT OVERRIDE
* = *
=

66-4

Report Tone Duration

Select the length of the Indication Tones.

Default: 60 seconds **Range:** 01-99 seconds

MENU 6 CHART

- 61 Receiver 1**
 1. Telephone Number
 2. Account Number
 3. Receiver Format
 4. Dial Attempts
- 62 Receiver 2**
 1. Telephone Number
 2. Account Number
 3. Receiver Format
 4. Dial Attempts
- 63 Receiver Options**
 - 63-1 Alarm Reports
 - 63-2 Open/Close Reports
 - 63-3 System Code Report
- 64 Dial Features**
 - 64-1 Dial Features
 1. TT or Rotary
 2. Rotary Fallback
 3. 2300Hz Tones
 4. TLM
 - 64-2 Delay Before Dial
 - 64-3 Anti Jam
 - 64-4 AC-Fail Delay
- 65 Self Test**
 - 65-1 Fixed \ Start Time
 - 65-2 Test Signal Options
- 66 Personal Alarm Call**
 - 66-1 Telephone Number
 - 66-2 Tone 1 Assignment
 - 66-3 Tone 2 Assignment
 - 66-4 Report Tone Duration
- 67 Pager**
 - 67-1 Telephone Number
 - 67-2 Message Assignment
 - 67-3 Report Range-Alarm
 - 67-4 Report Range- Trouble
 - 67-5 Report Range- O/C
 - 67-6 Acct Number Alm
 - 67-7 Acct Number Trbl
 - 67-8 Acct Number O/C
 - 67-9 Pager Delay

MENU 6 CHART

- 61 Receiver 1**
 - 1. Telephone Number
 - 2. Account Number
 - 3. Receiver Format
 - 4. Dial Attempts
- 62 Receiver 2**
 - 1. Telephone Number
 - 2. Account Number
 - 3. Receiver Format
 - 4. Dial Attempts
- 63 Receiver Options**
 - 63-1 Alarm Reports
 - 63-2 Open/Close Reports
 - 63-3 System Code Report
- 64 Dial Features**
 - 64-1 Dial Features
 - 1. TT or Rotary
 - 2. Rotary Fallback
 - 3. 2300Hz Tones
 - 4. TLM
 - 64-2 Delay Before Dial
 - 64-3 Anti Jam
 - 64-4 AC-Fail Delay
- 65 Self Test**
 - 65-1 Fixed \ Start Time
 - 65-2 Test Signal Options
- 66 Personal Alarm Call**
 - 66-1 Telephone Number
 - 66-2 Tone 1 Assignment
 - 66-3 Tone 2 Assignment
 - 66-4 Report Tone Duration
- 67 Pager**
 - 67-1 Telephone Number
 - 67-2 Message Assignment
 - 67-3 Report Range-Alarm
 - 67-4 Report Range- Trouble
 - 67-5 Report Range- O/C
 - 67-6 Acct Number Alm
 - 67-7 Acct Number Trbl
 - 67-8 Acct Number O/C
 - 67-9 Pager Delay

67 PAGER

THESE NINE ITEMS ALLOW THE SYSTEM TO REPORT SYSTEM ACTIVITY TO A PAGER. MOST PAGERS CANNOT DISPLAY HEXA-DECIMAL CHARACTERS, SO IT IS RECOMMENDED TO LIMIT ALL MESSAGES TO THE RANGE OF 0000 TO 9999.

67-1 Telephone Number

Select up to sixteen digits or characters the security system will dial to report an event to a pager. Press the OFF key to delete characters or numbers from the telephone number.

Default: FFFFFFFFFFFFFFFF **Range:** 0-9 (16 digit max.)

DIALING CHARACTERS
: = 3 SECOND DELAY
; = 5 SECOND DELAY WITH TONE DETECT OVERRIDE
* = *
=

BUTTON	ACTION
A	SCROLLS DIALING CHARACTERS BACKWARD
B	SCROLLS DIALING CHARACTERS FORWARD
C	ADVANCE CURSOR
D	REVERSE CURSOR
OFF	CLEAR DISPLAY

67-2 Message Assignment

Select which of the following types of events will be reported via pager. The Report Code Range sections shown below are an additional filtering system to control which codes will be transmitted to pager.

1. Alarms and Restores, (including Zone Trouble and Armed with Bypass)
2. System Troubles and Trouble Restores
3. Openings and Closings

Default: --- **Range:** 1 2 3

67-3 Report Range of Alarm Codes

This option allows any Alarm/Restore codes to be transmitted to the pager service that are within the selected range below. (See menu 67-2, Message Assignment)

Default: 01FF **Range:** 0000-FFFF

67-4 Report Code Range of System Trouble Codes

This option allows any Trouble/Restore codes to be transmitted to the pager service that are within the selected range below. (See menu 67-2, Message Assignment).

Default: 01FF **Range:** 0000-FFFF

67-5 Report Range of Open / Close Codes

This option allows any Open/Close codes to be transmitted to the pager service that are within the selected range below. (See menu 67-2, Message Assignment)

Default: 01FF **Range:** 0000-FFFF

67-6 Message Header for Alarm Codes

This entry displays on the pager immediately prior to the Alarm Report Codes (section 67-3). This field may contain a maximum of four digits.

(See menu 67-2, Message Assignment; 67-3, Report Range of Alarm Codes)

Default: FFFF **Range:** 0000-FFFF

67-7 Message Header for System Trouble Codes

This entry displays on the pager immediately prior to the System Trouble Report Codes (67-3). This field may contain a maximum of four digits.

(See menu 67-2, Message Assignment; 67-4, Report Range of Trouble Codes)

Default: FFFF **Range:** 0000-FFFF

67-8 Message Header for Open \ Close Codes

This entry displays on the pager immediately prior to the Open \ Close Report Codes (67-3). This field may contain a maximum of four digits.

(See menu 67-2, Message Assignment; 67-5, Report Range of Open/Close Codes)

Default: FFFF **Range:** 0000-FFFF

67-9 Pager Delay

Set the amount of time the system will wait to transmit report codes after dialing the paging service.

Note: It is recommended to contact the paging service for the correct amount of time or send a few test transmissions to ensure the correct amount of time has been entered.

Default: 10 **Range:** 01-20 seconds

MENU 7 - REPORT CODES

THE FOLLOWING SEVEN MENUS AND THEIR SUB-MENUS DETERMINE THE OPERATION OF THE REPORTING PORTION OF THE ALARM SYSTEM.

71 ZONE REPORT CODES

THESE FOUR SUB-MENUS DETERMINE THE ZONE REPORT CODES OF THE SECURITY SYSTEM.

SELECT ZONE NUMBER

- 71-Z#-01 Zone Alarm**
Select the Zone Alarm Report Code to be transmitted to the central station.
Default: 00 Range: 00-FF Contact ID \ SIA
- 71-Z#-02 Zone Trouble**
Select the Zone Trouble Report Code to be transmitted to the central station.
Default: 00 Range: 00-FF Contact ID \ SIA
- 71-Z#-03 Zone Bypass**
Select the Zone Bypass Report Code to be transmitted to the central station.
Default: 00 Range: 00-FF Contact ID \ SIA
- 71-Z#-04 Zone Restore**
Select the Zone Restore Report Code to be transmitted to the central station.
Default: 00 Range: 00-FF Contact ID \ SIA

72 KEYPAD ALARM REPORT CODES

THESE THREE SUB-MENUS DETERMINE THE KEYPAD REPORT CODES OF THE SECURITY SYSTEM.

- 72-1 Keypad Panic**
Select the Keypad Panic Alarm Report Code to be transmitted to the central station.
Default: 00 Range: 00-FF Contact ID \ SIA
- 72-2 Keypad Fire**
Select the Keypad Fire Alarm Report Code to be transmitted to the central station.
Default: 00 Range: 00-FF Contact ID \ SIA
- 72-3 Keypad Emergency**
Select the Keypad Emergency Alarm Report code to be transmitted to the central station.
Default: 00 Range: 00-FF Contact ID \ SIA

73 USER ARMING REPORT CODES

THESE TWO SUB-MENUS DETERMINE THE OPEN AND CLOSE REPORT CODES OF THE SECURITY SYSTEM.

SELECT USER NUMBER

- 73-U#-1 User Open**
Select the User Open Report Code to be transmitted to the central station.
Default: 00 Range: 00-FF Contact ID \ SIA
- 73U#-2 User Close**
Select the User Close Report Code to be transmitted to the central station.
Default: 00 Range: 00-FF Contact ID \ SIA

MENU 7 CHART

- 71. Zone Report Codes**
 - 71-1 Zone Alarm
 - 71-2 Zone Trouble
 - 71-3 Zone Bypass
 - 71-4 Zone Restore
- 72. Keypad Report Codes**
 - 72-1 Keypad Panic
 - 72-2 Keypad Fire
 - 72-3 Keypad Emergency
- 73. User Report Codes**
 - 73-U#-1 User Open
 - 73-U#-2 User Close
- 74 Trouble Report Codes (1)**
 - 74-1 AC Fail
 - 74-2 AC Restore
 - 74-3 Low Battery
 - 74-4 Battery Restore
 - 74-5 Box Tamper
 - 74-6 Box Tamper Restore
 - 74-7 Bell Fault
 - 74-8 Bell Fault Restore
- 75 Trouble Report Codes (2)**
 - 75-1 Bus Fail
 - 75-2 Bus Fail Restore
 - 75-3 AUX Power Trouble
 - 75-4 AUX Power Restore
 - 75-5 Clock Trouble
 - 75-6 Clock Restore
 - 75-7 Telephone Trouble
 - 75-8 Telephone Restore
- 76 Trouble Report Codes (3)**
 - 76-1 Sensor Tamper Trouble
 - 76-2 Sensor Tamper Rest.
 - 76-3 Communication Fail
- 77 Misc. Report Codes (1)**
 - 77-1 Duress
 - 77-2 Cancel
 - 77-3 Auto Arm
 - 77-4 Fail to Auto Arm
 - 77-5 Self Test
 - 77-6 Abnormal Test
 - 77-7 Recent Close
 - 77-8 Exit Error
- 78 Misc. Report Codes (2)**
 - 78-1 Force Arm
 - 78-2 Remote Arm
 - 78-3 Remote Disarm
 - 78-4 Full Arm
 - 78-5 Partial Arm
- 79 2 Wire Smoke Report Codes**
 - 79-1 2-Wire Smoke Alarm
 - 79-2 2-Wire Smoke Trouble
 - 79-3 2-Wire Smoke Restore

MENU 7 CHART

71. Zone Report Codes

- 71-1 Zone Alarm
- 71-2 Zone Trouble
- 71-3 Zone Bypass
- 71-4 Zone Restore

72. Keypad Report Codes

- 72-1 Keypad Panic
- 72-2 Keypad Fire
- 72-3 Keypad Emergency

73. User Report Codes

- 73-U#-1 User Open
- 73-U#-2 User Close

74 Trouble Report Codes (1)

- 74-1 AC Fail
- 74-2 AC Restore
- 74-3 Low Battery
- 74-4 Battery Restore
- 74-5 Box Tamper
- 74-6 Box Tamper Restore
- 74-7 Bell Fault
- 74-8 Bell Fault Restore

75 Trouble Report Codes (2)

- 75-1 Bus Fail
- 75-2 Bus Fail Restore
- 75-3 AUX Power Trouble
- 75-4 AUX Power Restore
- 75-5 Clock Trouble
- 75-6 Clock Restore
- 75-7 Telephone Trouble
- 75-8 Telephone Restore

76 Trouble Report Codes (3)

- 76-1 Sensor Tamper Trouble
- 76-2 Sensor Tamper Rest.
- 76-3 Communication Fail

77 Misc. Report Codes (1)

- 77-1 Duress
- 77-2 Cancel
- 77-3 Auto Arm
- 77-4 Fail to Auto Arm
- 77-5 Self Test
- 77-6 Abnormal Test
- 77-7 Recent Close
- 77-8 Exit Error

78 Misc. Report Codes (2)

- 78-1 Force Arm
- 78-2 Remote Arm
- 78-3 Remote Disarm
- 78-4 Full Arm
- 78-5 Partial Arm

79 2 Wire Smoke Report Codes

- 79-1 2-Wire Smoke Alarm
- 79-2 2-Wire Smoke Trouble
- 79-3 2-Wire Smoke Restore

74 TROUBLE REPORT CODES

THESE EIGHT ITEMS DETERMINE THE SYSTEM TROUBLE REPORT CODES OF THE SECURITY SYSTEM.

74-1 AC Fail

Select the AC Fail Report Code to be transmitted to the central station.
Default: 00 Range: 00-FF Contact ID \ SIA

74-2 AC Restore

Select the AC Restore Report Code to be transmitted to the central station.
Default: 00 Range: 00-FF Contact ID \ SIA

74-3 Battery Trouble

Select the Battery Trouble Report Code to be transmitted to the central station.
Default: 00 Range: 00-FF Contact ID \ SIA

74-4 Battery Restore

Select the Battery Restore Report Code to be transmitted to the central station.
Default: 00 Range: 00-FF Contact ID \ SIA

74-5 Box Tamper

Select the Box Tamper Report Code to be transmitted to the central station.
(See menu 35-1, PGM 3 Type)
Default: 00 Range: 00-FF Contact ID \ SIA

74-6 Box Tamper Restore

Select the Box Tamper Restore Report Code to be transmitted to the central station. *(See menu 35-1, PGM 3 Type)*
Default: 00 Range: 00-FF Contact ID \ SIA

74-7 Bell Fault Trouble

Select the Bell Fault Trouble Report Code to be transmitted to the central station.
Default: 00 Range: 00-FF Contact ID \ SIA

74-8 Bell Fault Restore

Select the bell fault restore report code to be transmitted to the central station.
Default: 00 Range: 00-FF Contact ID \ SIA

75 TROUBLE REPORT CODES (2)

THESE FIVE ITEMS ARE A CONTINUATION OF 74 AND DETERMINE THE SYSTEM TROUBLE REPORT CODES OF THE SECURITY SYSTEM.

75-1 Bus Fail

Select the Bus Fault Report Code to be transmitted to the central station.
Default: 00 Range: 00-FF Contact ID \ SIA

75-2 Bus Fail Restore

Select the Bus Fault Restore Report Code to be transmitted to the central station.
Default: 00 Range: 00-FF Contact ID \ SIA

75-3 AUX Power Trouble

Select the Auxiliary Power Trouble Report Code to be transmitted to the central station.
Default: 00 Range: 00-FF Contact ID \ SIA

75-4 AUX Power Restore

Select the Auxiliary Power Restore Report Code to be transmitted to the central station.
Default: 00 Range: 00-FF Contact ID \ SIA

MENU 7 - REPORT CODES

75 TROUBLE REPORT CODES (2)

- 75-5 Clock Trouble**
 Select the Clock Trouble Report Code to be transmitted to the central station.
Default: 00 Range: 00-FF Contact ID \ SIA
- 75-6 Clock Restore**
 Select the Clock Restore Report Code to be transmitted to the central station.
Default: 00 Range: 00-FF Contact ID \ SIA
- 75-7 Telephone Trouble**
 Select the Telephone Trouble Report Code to be transmitted to the central station.
Default: 00 Range: 00-FF Contact ID \ SIA
- 75-8 Telephone Restore**
 Select the Telephone Restore Report Code to be transmitted to the central station.
Default: 00 Range: 00-FF Contact ID \ SIA

76 TROUBLE REPORT CODES (3)

THESE FIVE ITEMS ARE A CONTINUATION OF 74 AND DETERMINE TROUBLE REPORT CODES OF THE SECURITY SYSTEM

- 76-1 Sensor Tamper Trouble (PGM-IN)**
 Select the Sensor Tamper Loop Trouble Report Code to be transmitted to the central station.
(See menu 35-1, PGM 3 Type)
Default: 00 Range: 00-FF Contact ID \ SIA
- 76-2 Sensor Tamper Restore (PGM-IN)**
 Select the Sensor Tamper Loop Restore Report Code to be transmitted to the central station.
(See menu 35-1, PGM 3 Type)
Default: 00 Range: 00-FF Contact ID \ SIA
- 76-3 Communication Fail**
 Select the Communication Failure Report Code to be transmitted via radio or Receiver 2.
Default: 00 Range: 00-FF Contact ID \ SIA

77 MISCELLANEOUS REPORT CODES (1)

THESE SIX ITEMS DETERMINE MISCELLANEOUS REPORT CODES OF THE SECURITY SYSTEM.

- 77-1 Duress**
 Select the Duress Report Code to be transmitted to the central station.
Default: 00 Range: 00-FF Contact ID \ SIA
- 77-2 Cancel**
 Select the Cancel Report Code to be transmitted to the central station.
Default: 00 Range: 00-FF Contact ID \ SIA
- 77-3 Auto-Arm**
 Select the auto arm report code to be transmitted to the central station.
Default: 00 Range: 00-FF Contact ID \ SIA
- 77-4 Fail to Auto-Arm**
 Select the Fail to Auto-Arm Report Code to be transmitted to the central station.
Default: 00 Range: 00-FF Contact ID \ SIA
- 77-5 Self-Test**
 Select the Self-Test Report Code to be transmitted to the central station.
Default: 00 Range: 00-FF Contact ID \ SIA

MENU 7 CHART

- 71. Zone Report Codes**
 71-1 Zone Alarm
 71-2 Zone Trouble
 71-3 Zone Bypass
 71-4 Zone Restore
- 72. Keypad Report Codes**
 72-1 Keypad Panic
 72-2 Keypad Fire
 72-3 Keypad Emergency
- 73. User Report Codes**
 73-U#-1 User Open
 73-U#-2 User Close
- 74 Trouble Report Codes (1)**
 74-1 AC Fail
 74-2 AC Restore
 74-3 Low Battery
 74-4 Battery Restore
 74-5 Box Tamper
 74-6 Box Tamper Restore
 74-7 Bell Fault
 74-8 Bell Fault Restore
- 75 Trouble Report Codes (2)**
 75-1 Bus Fail
 75-2 Bus Fail Restore
 75-3 AUX Power Trouble
 75-4 AUX Power Restore
 75-5 Clock Trouble
 75-6 Clock Restore
 75-7 Telephone Trouble
 75-8 Telephone Restore
- 76 Trouble Report Codes (3)**
 76-1 Sensor Tamper Trouble
 76-2 Sensor Tamper Rest.
 76-3 Communication Fail
- 77 Misc. Report Codes (1)**
 77-1 Duress
 77-2 Cancel
 77-3 Auto Arm
 77-4 Fail to Auto Arm
 77-5 Self Test
 77-6 Abnormal Test
 77-7 Recent Close
 77-8 Exit Error
- 78 Misc. Report Codes (2)**
 78-1 Force Arm
 78-2 Remote Arm
 78-3 Remote Disarm
 78-4 Full Arm
 78-5 Partial Arm
- 79 2 Wire Smoke Report Codes**
 79-1 2-Wire Smoke Alarm
 79-2 2-Wire Smoke Trouble
 79-3 2-Wire Smoke Restore

MENU 7 CHART

71. Zone Report Codes

- 71-1 Zone Alarm
- 71-2 Zone Trouble
- 71-3 Zone Bypass
- 71-4 Zone Restore

72. Keypad Report Codes

- 72-1 Keypad Panic
- 72-2 Keypad Fire
- 72-3 Keypad Emergency

73. User Report Codes

- 73-U#-1 User Open
- 73-U#-2 User Close

74 Trouble Report Codes (1)

- 74-1 AC Fail
- 74-2 AC Restore
- 74-3 Low Battery
- 74-4 Battery Restore
- 74-5 Box Tamper
- 74-6 Box Tamper Restore
- 74-7 Bell Fault
- 74-8 Bell Fault Restore

75 Trouble Report Codes (2)

- 75-1 Bus Fail
- 75-2 Bus Fail Restore
- 75-3 AUX Power Trouble
- 75-4 AUX Power Restore
- 75-5 Clock Trouble
- 75-6 Clock Restore
- 75-7 Telephone Trouble
- 75-8 Telephone Restore

76 Trouble Report Codes (3)

- 76-1 Sensor Tamper Trouble
- 76-2 Sensor Tamper Rest.
- 76-3 Communication Fail

77 Misc. Report Codes (1)

- 77-1 Duress
- 77-2 Cancel
- 77-3 Auto Arm
- 77-4 Fail to Auto Arm
- 77-5 Self Test
- 77-6 Abnormal Test
- 77-7 Recent Close
- 77-8 Exit Error

78 Misc. Report Codes (2)

- 78-1 Force Arm
- 78-2 Remote Arm
- 78-3 Remote Disarm
- 78-4 Full Arm
- 78-5 Partial Arm

79 2 Wire Smoke Report Codes

- 79-1 2-Wire Smoke Alarm
- 79-2 2-Wire Smoke Trouble
- 79-3 2-Wire Smoke Restore

77 MISCELLANEOUS REPORT CODES

77-6 Abnormal Test Code

Select the Abnormal Self-Test Report Code to be transmitted to the central station.
Default: 00 **Range: 00-FF Contact ID \ SIA**

77-7 Recent Close

Select the Recent Close Report Code to be transmitted to the central station.
Default: 00 **Range: 00-FF Contact ID \ SIA**

77-8 Exit Error

Select the Exit Error Report Code to be transmitted to the central station.
Default: 00 **Range: 00-FF Contact ID \ SIA**

78 MISCELLANEOUS REPORT CODES

THESE FIVE ITEMS DETERMINE MISCELLANEOUS REPORT CODES OF THE SECURITY SYSTEM.

78-1 Force- Arm

Select the Force-Arm Report Code to be transmitted to the central station.
Default: 00 **Range: 00-FF Contact ID \ SIA**

78-2 Remote Arm (by RPU)

Select the Remote Arming Report Code to be transmitted to the central station.
Default: 00 **Range: 00-FF Contact ID \ SIA**

78-3 Remote Disarm (by RPU)

Select the Remote Disarming Report Code to be transmitted to the central station.
Default: 00 **Range: 00-FF Contact ID \ SIA**

78-4 Fully Armed

Select the Fully Armed Report Code to be transmitted to the central station when the alarm system is fully armed. This reporting option can be used with all arming modes.
Default: 00 **Range: 00-FF Contact ID \ SIA**

78-5 Partial Arm

Select the Partial Arm Report Code to be transmitted to the central station when a portion of the security system armed. This reporting option is used with all arming modes.
Default: 00 **Range: 00-FF Contact ID \ SIA**

79 2-WIRE SMOKE REPORT CODES

THESE THREE ITEMS DETERMINE THE 2-WIRE SMOKE DETECTOR REPORT CODES FOR THE SECURITY SYSTEM.

79-1 2-Wire Smoke Alarm

Select the 2-Wire Smoke Alarm Report Code to be transmitted to the central station.
Default: 00 **Range: 00-FF Contact ID \ SIA**

79-2 2-Wire Smoke Trouble

Select the 2-Wire Smoke Trouble Report Code to be transmitted to the central station.
Default: 00 **Range: 00-FF Contact ID \ SIA**

79-3 2-Wire Smoke Restore

Select the 2-Wire Smoke Restore Report Code to be transmitted to the central station.
Default: 00 **Range: 00-FF Contact ID \ SIA**

MENU 8 - DOWNLOAD (RPU)

81 DOWNLOAD (RPU)

THESE SIX ITEMS DETERMINE THE CHARACTERISTICS OF THE ALARM SYSTEM'S DOWNLOADING FUNCTIONS.

81-1 RPU Telephone Number

Enter up to sixteen digits or characters the alarm system will need to dial in order to reach the RPU computer to begin a download session. Press the OFF key to delete characters or numbers from the telephone number. *See chart below for characters*

Default: FFFFFFFFFFFFFFFF **Range:** 0-9 (16 digit max.)

BUTTON	ACTION
A	SCROLLS DIALING CHARACTERS FORWARD
B	SCROLLS DIALING CHARACTERS FORWARD
C	ADVANCE CURSOR
D	REVERSE CURSOR
OFF	CLEAR DISPLAY

DIALING CHARACTERS
: = 3 SECOND DELAY
; = 7 SECOND DELAY
* = *
=

81-2 Panel Access ID

The Panel Access ID of the RPU computer must match this number to receive authorization to conduct a remote programming session.

Default: FFFF **Range:** 0000-FFFF

81-3 Local Download PIN

A User at the premise enters this PIN number to initiate a download session with the remote computer.

Default: FFFF **Range:** 0000-9999

81-4 RPU Features

Default: -- **Range:** 1 2

1. Double Call

This option enables remote downloading sessions to be initiated by the Double Call method. To initiate a session using this system call the security system's telephone line and disconnect before the second ring, call back within the time period programmed in menu 81-6 and the security system will seize the line to commence a downloading session.

(See menu #81-6, Double Call Waiting Time)

2. Security Call Back

This option adds security for communication between the panel and RPU computer. When the RPU computer connects with the panel, the panel will hang up and dial the RPU computer's telephone number (programed in menu 81-1, RPU Telephone Number).

81-5 Number of Rings for Pick-Up

Specify the number of rings the security system will wait before picking-up the telephone line to initiate a downloading session.

Default: 12 **Range:** 01-99

Double Call Wait Time

This option sets a time window for the panel to wait for the second call of the Double Call process. If the second call is not received within this amount of time after the initial (single ring) call, the panel will stop waiting for the second call Double Call and revert to normal status.

(See menu 81-4-0, Double Call)

Default: 60 seconds **Range:** 00-99 seconds

MENU 8 CHART

- 81 Download (RPU)
- 81-1 Telephone Number
- 81-2 Panel Access ID
- 81-3 Local RPU PIN
- 81-4 RPU Features
 - 1. Double Call
 - 2. Call Back
- 81-5 Number of Rings
- 81-6 Double Call Wait Time

GLOSSARY

2300Hz / 1400Hz	There are two tones that are emitted from central station receivers, known as Handshake and Kiss-off. These tones are 2300Hz or 1400Hz and inform the communicator that the central station receiver is available to accept the digital information (Handshake) and that the information has been received and please shutdown (Kiss-off).
ABNORMAL TEST CODE	This report code is transmitted instead of the normal self test code if a Fire Zone remains in a non-secure condition.
AC CYCLES	This determines the accuracy of the time clock. It must be set for 60Hz for the USA.
ANTI-JAM TIME	This is the amount of time the telephone company requires to recognize the completion of a phone call and to reestablish dial tone for the next phone call.
AUTO-ARM	This allows the security system to arm itself at a preprogrammed time each day.
AUTO-CHIME ON DISARM	This allows the chime function of the security system to automatically activate upon disarming.
AUTOMATIC BELL TEST	This activates the bell circuit for app. two seconds upon arming the security system.
BUS	This is a data circuit which allows the installation and supervision of the keypads.
CALL BACK	This is a security feature of the RPU that inhibits unauthorized access of the alarm system via a remote computer.
CHIME OPTION	This option allows keypad annunciation of access to specified areas while the security system is disarmed.
CLOCK	The System Clock works in conjunction with Auto-Arm, History Log, and the Communication Test features.
DEFAULT INSTALLER PROGRAM	This option allows all programming to be reset to factory default settings.
DEFAULT INSTALLER'S PIN	The original factory setting of the PIN number used to access programming (9999).
DELAY BEFORE DIAL	This is a SIA False Alarm Reduction Option which allows users the ability to cancel the transmission of inadvertent alarm signals.
DIAL ATTEMPTS	This is the number of attempts the security system will try to communicate with central station.
DOUBLE CALL FEATURE	This option requires two calls from the host computer to initiate a downloading session. The first call signals the security system that the host computer is attempting to establish communications. The security system will answer the next phone call if it is received within the programmed window (Double Call Waiting Time).
DURESS PIN	This option disarms the security system and sends a signal to central station alerting them that the user is being forced to disarm.
ENTRY DELAY	This period of time allows the user to enter the premise and disarm the security system without activating an alarm condition.
ENTRY FOLLOWER	This Zone Type allows users to enter an area in order to disarm the security system. If the Entry Follower Zone is violated after an Entry Delay Zone, it will follow the entry delay and not create an instant alarm. However, if it is violated before an Entry Delay Zone, the Entry Follower Zone will create an instant alarm.
EXIT DELAY	This period of time allows users to exit the premise after arming the security system without activating an alarm condition.

FORCE ARM	This option allows the security system to be armed even if a zone is in a non-secure condition and cannot be secured at time of arming. If the zone restores during the armed period, it will become armed with the rest of the system.
HISTORY	A chronological log of events that will be stored and/or printed.
IGNORE DURING DELAY	This option allows users to arm the system with the specified zone in a non-secure condition. If this zone is not secured when the system arms, an alarm condition will occur.
INSTALLER PIN	This code is required to access programming functions pertaining to the operational features of the alarm system.
KEYPAD ALARMS	These alarms are activated by pressing keys at any keypad.
LOOP RESPONSE	This determines the length of time the zone must remain non-secure for the security system to recognize an alarm activation.
LOOP TYPE	This determines the type of EOL configuration the zone will require.
NIGHT BYPASS	This options allows the specified zone to be automatically removed from the security system when the Night Button (D Key) is used to arm the system.
PAGER CALL	This option allows the security system to call a pager to report an alarm condition, opening or closing, or system trouble.
PERSONAL ALARM CALL	This option allows the security system to make a telephone call and use warning tones to report an alarm condition, opening or closing, or system trouble.
PIN	Personal Identification Number (PIN) is required for performing functions such as arming, disarming, or assigning PINs. All PINs are assigned an authority level (1-4) which defines the activities accessible to the user.
PGM	This is a low current transistor output that sinks to ground when activated to provide 50ma current. PGM's are programmable and may be used for a variety of options.
QUICK EXIT	Bypasses all zones for two minutes to allow a user to exit the premises while the security system is armed (without entering the PIN to disarm and rearm).
RECEIVER	A device located at the central station that deciphers information sent by the security system's digital communicator.
RECENT CLOSE	An optional report code to inform central station that the current alarm occurred within 2 minutes of the expiration of the exit delay time.
REPORT CODE	A digital code that is sent to central station to alert them of activity at the security system.
RPU (REMOTE PROGRAMMING UTILITY)	Remote Programming Utility is the software which is used to download (or upload) programming information or operational commands to the security system.
SWINGER SHUNT	This option allows zones to be shunted (bell and communicator) automatically during the armed period after one alarm has been generated.
TEMPLATE	A preestablished format for loading information into the security system which saves time by eliminating repetitive data entry.
TLM	A circuit that monitors the telephone line connected to the alarm system.
WALK TEST	A procedure for testing the proper operation of the security system.
ZONE	An individual circuit of the security system. It connects the alarm output from protection device(s) to the security system to process alarm and trouble conditions (if programmed).

VISION V-CP1 CONTROL PANEL

Ordering Information

ENGLISH

V-CP1 LED

PACKAGE INCLUDES CONTROL PANEL (IN CABINET), V-LED1 KEYPAD AND ACCESSORIES.

V-CP1 LCD

PACKAGE INCLUDES CONTROL PANEL (IN CABINET) V-LCD1 KEYPAD AND ACCESSORIES

V-CP1 PCB

PCB ONLY W/ MANUALS

V-LED1

LED KEYPAD W/ USER MANUAL

V-LCD1

LCD KEYPAD W/ USER MANUAL

SPANISH

V-CP1 LED(S)

SPANISH PACKAGE INCLUDES CONTROL PANEL (IN CABINET), V-LED1 KEYPAD AND ACCESSORIES.

V-CP1 LCD(S)

SPANISH PACKAGE INCLUDES CONTROL PANEL (IN CABINET) V-LCD1 KEYPAD AND ACCESSORIES

V-CP1 PCB(S)

PCB ONLY W/SPANISH MANUALS

V-LED1(S)

SPANISH LED KEYPAD(S) W/SPANISH MANUALS

V-LCD1(S)

SPANISH LCD KEYPAD(S) W/SPANISH MANUALS

